

Product information

14-3-3 eta, 1-246 aa

Human, His-tagged, Recombinant, *E.coli*

Cat. No. IBYWH0802

Full name: Tyrosine 3-monooxygenase/tryptophan 5-monooxygenase activation protein, eta polypeptide

Synonyms: YWHA1, YWHAH

NCBI Accession No.: NP_003396

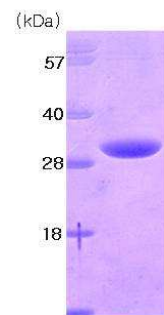
Description: The 14-3-3 family of proteins plays a key regulatory role in signal transduction, checkpoint control, apoptotic and nutrient-sensing pathways. 14-3-3 proteins are highly conserved and ubiquitously expressed. There are at least seven isoforms, β , γ , ϵ , σ , ζ , τ and η that have been identified in mammals. The 14-3-3 eta, a subtype of the 14-3-3 family of proteins, was found in B cells, brain, cerebrospinal fluid *etc.* 14-3-3 eta interacts with and relocalizes the A20 zinc finger protein from the insoluble to the soluble fraction, suggesting a chaperone function. Recombinant human 14-3-3 eta, fused to His-tag at N-terminus, was expressed in *E.coli* and purified by conventional chromatography techniques.

Form: Liquid in 20 mM Tris pH 8.0

Molecular Weight: 30.3 kDa (266 aa), confirmed by MALDI-TOF

Purity: > 95% by SDS - PAGE

Concentration: 1 mg/ml (determined by Bradford assay)



15% SDS-PAGE (3ug)

Sequences of amino acids:

MGSSHHHHHH SSGLVPRGSH MGDREQLLQR ARLAEQAERY DDMASAMKAV TELNEPLSNE DRNLLSVAYK NVVGARRSSW RVISSIEQKT
MADGNEKKLE KVKAYREKIE KELETVCNDV LSLLDKFLIK NCNDFQYESK VFYLMKMGDY YRYLAEVASG EKKNSSVEAS EAAYKEAFEI
SKEQMGPHTP IRLGLALNFS VFYYEIQNAP EQACLLAKQA FDDAIAELDT LNESYKOST LIMQLLRDNL TLWTSDDQQDE EAGEGN

General references:

Sato S., *et al.* (2006) *EMBO J* 25(1):211–21

Chen J., *et al.* (2007), *J Neurosci Res.* 85(8):1724-33

Storage: Can be stored at +4°C short term (1-2 weeks). For long term storage, aliquot and store at -20°C or -70°C. Avoid repeated freezing and thawing cycles.

For research use only. This product is not intended or approved for human, diagnostics or veterinary use.



Manufactured for:

Immuno-Biological Laboratories, Inc. (IBL-America)
8201 Central Ave. NE, Suite P, Minneapolis, Minnesota 55432, USA

Phone: (888) 523-1246

Fax.: (763) 780-2988

Email: info@ibl-america.com

Web: www.ibl-america.com