

# Product information



## SHP-1, 243-541 aa

Human, Recombinant, *E.coli*

Cat. No. IBSHP2001

**Full name:** Protein tyrosine phosphatase, non-receptor type 6 isoform 1

**NCBI Accession No.:** NP\_002822

**Synonyms:** PTPN6, HCP, HCPH, HPTP1C, PTP-1C, SH-PTP1, SHP-1L, SHP1

**Description:** The protein coding region of the catalytic domain of SHP-1 (amino acids 243-541) was cloned into an *E. coli* expression vector. The catalytic domain of SHP-1 was overexpressed as insoluble protein aggregates (inclusion bodies). The recombinant SHP-1 protein was purified by FPLC gel-filtration chromatography, after refolding of the isolated inclusion bodies in a redox buffer. Additional amino acid(Met) is attached at N-terminus.

**Form:** Liquid. In 25 mM Tris-HCl buffer (pH 7.5) containing 1 mM DTT  
2 mM  $\beta$ -mercaptoethanol, 1 mM EDTA 20% glycerol

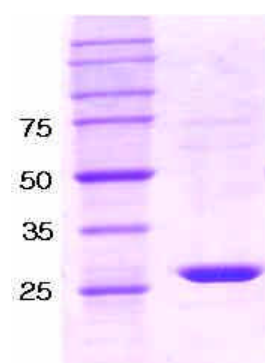
**Molecular Weight:** 34.3 kDa (300 aa), confirmed by MALDI-TOF

**Purity:** > 95% by SDS - PAGE

**Concentration:** 1 mg/ml (determined by Bradford assay)

**Specific activity:** >5,000units/mg of SHP-1

**Unit Definition:** One unit will hydrolyze 1nanomole of p-nitrophenyl-phosphatase(pNPP) per minute at pH 7.4 at 37°C using 10mM of substrate.



15% SDS-PAGE (3ug)

### Sequences of amino acids:

MGFWEEFESL QKQEVKNLHQ RLEGQRPENK GKNRYKNILP FDHSRVILQG RDSNIPGSDY INANYIKNQL LGPDENAKTY IASQGCLEAT  
VNDFWQMAWQ ENSRVIVMTT REVEKGRNKC VPYWPEVGMQ RAYGPYSVTN CGEHDTEYK LRTLQVSPLD NGDLIREIWH YQYLSWPDHG  
VPSEPGGVLS FLDQINQRQE SLPHAGPIIV HCSAGIGRTG TIIVIDLME NISTKGLDCD IDIQKTIQMV RAQRSGMVQT EAQYKFIIYA  
IAQFIETTKK KLEVLQSQKG QESEYGNITY

### General references:

Shen SH., *et al.* (1991) *Nature* 352, 736-739.

Wu C., *et al.* (2003) *Gene*. 306,1-12.

**Storage:** Can be stored at +4°C short term (1-2 weeks). For long term storage, aliquot and store at -20°C or -70°C. Avoid repeated freezing and thawing cycles.

For research use only. This product is not intended or approved for human, diagnostics or veterinary use.



Immuno-Biological Laboratories, Inc. (IBL-America)  
8201 Central Ave. NE, Suite P, Minneapolis, Minnesota 55432, USA  
Phone: +1 (763) - 780-2955 Fax.: +1 (763) - 780-2988  
Email: [info@ibl-america.com](mailto:info@ibl-america.com) Web: [www.ibl-america.com](http://www.ibl-america.com)