

Product Information

Recombinant human RAC1 protein

Catalog Number: IBRAC0501



PRODUCT INFORMATION

Expression system

E.coli

Domain

1-192aa

UniProt No.

P63000

NCBI Accession No.

NP_008839

Alternative Names

Ras-related C3 botulinum toxin substrate 1 isoform Rac1, RAC1, RAC1, p21-Rac1, Ras-like protein TC25, Cell migration-inducing gene 5 protein, Ras-related C3 botulinum toxin substrate 1, Ras-related C3 botulinum toxin substrate 1 isoform Rac1 MGC111543, MIG 5, MIG5, Migration inducing gene 5, Migration inducing protein 5, p21 Rac1, Rac 1, Ras like protein TC25, Ras related C3 botulinum toxin substrate 1, Rho family small GTP binding protein Rac1, TC 25,

PRODUCT SPECIFICATION

Molecular Weight

21.4 kDa (192aa) confirmed by MALDI-TOF

Concentration

1mg/ml (determined by Bradford assay)

Formulation

Liquid in. 20mM Tris-HCl buffer (pH 7.5) containing 2mM EDTA, 1mM DTT, 10% Glycerol

Purity

> 95% by SDS-PAGE

Tag

Non-Tagged

Application

SDS-PAGE

Storage Condition

Can be stored at +2C to +8C for 1 week. For long term storage, aliquot and store at -20C to -80C. Avoid repeated freezing and thawing cycles.

BACKGROUND

Description

Rac1, belonging to the Rho small GTPase family, regulates the actin cytoskeleton but also other cellular processes. RAC1 have been shown to be involved in the regulation of cell-cell adhesion. Recombinant RAC1 was

For research use only. This product is not intended or approved for human, diagnostics or veterinary use.



Manufactured for:

Immuno-Biological Laboratories, Inc. (IBL-America)

8201 Central Ave. NE, Suite P, Minneapolis, Minnesota 55432, USA

Phone: (888) 523-1246

Fax: (763) 780-2988

Email: info@ibl-america.com

Web: www.ibl-america.com

Product Information

Recombinant human RAC1 protein

Catalog Number: IBRAC0501



expressed in E. coli and purified by using conventional chromatography techniques.

Amino acid Sequence

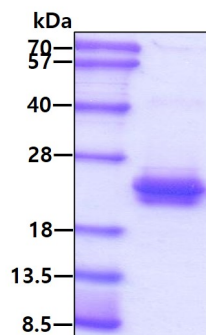
MQAIKCVVVG DGAVGKTCLL ISYTTNAFPG EYIPTVFDNY SANVMVDGKP VNLGLWDTAG QEDYDRLRPL SYPQTDVFLI
CFSLVSPASF ENVRAKWYPE VRHHCNTPPI ILVGTKLCLR DDKDTIEKLEK EKKLTPITYP QGLAMAKEIG AVKYLECSAL
TQRGLKTVFD EAIRAVLCPP PVKKRKRKCL LL

General References

Chrostek A., et al. (2006) Mol Cell Biol. 26, 6957-70.
Sun CX., (2004) Blood. 104(12):3758-65.

DATA

SDS-PAGE



3ug by SDS-PAGE under reducing condition and visualized by coomassie blue stain.

For research use only. This product is not intended or approved for human, diagnostics or veterinary use.



Manufactured for:
Immuno-Biological Laboratories, Inc. (IBL-America)
8201 Central Ave. NE, Suite P, Minneapolis, Minnesota 55432, USA
Phone: (888) 523-1246 Fax: (763) 780-2988
Email: info@ibl-america.com Web: www.ibl-america.com