

Product information



KIR2DL1, 23-223 aa

Human, Recombinant, *E.coli*

Cat. No. IBKIR3001

Full name: Killer cell immunoglobulin-like receptor 2DL1

NCBI Accession No.: NP_055033

Synonyms: NKAT-1, p58 NK receptor, CD158a

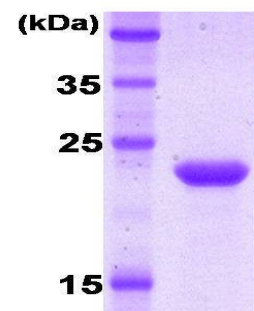
Description: An inhibitory Keller Cell Ig-like Receptor(KIR, previously called p58 KIR, p58.1, cl-42, NKAT1, or KIR-K6), which recognizes class I MHC molecules(HLA-Cw2, -Cw4, -Cw5, and Cw6). The protein coding region of the extracellular domain of KIR2DL1(amino acids 1-202) was cloned into an *E. coli* expression vector. The extracellular domain of KIR2DL1 was overexpressed as insoluble protein aggregates(inclusion bodies). The recombinant KIR2DL1 protein was purified by FPLC gel-filtration chromatography, after refolding of the isolated inclusion bodies in a redox buffer.

Form: Liquid. In 20 mM Tris-HCl buffer (pH 7.5)

Molecular Weight: 22.2kDa (202aa), confirmed by MALDI-TOF

Purity: > 95% by SDS - PAGE

Concentration: 1 mg/ml (determined by Bradford assay)



15% SDS-PAGE (3ug)

Sequences of amino acids:

MEGVHRKPSL LAHPGRLVKS EETVILQCWS DVMFEHFLLH REGMFNDTLR LIGEHHDGVS KANFSISRMT QDLAGTYRCY GSVTHSPYQV
SAPSDPLDIV IIGLYEKPSL SAQLGPTVLA GENVTLSLSCSS RSSYDMYHLS REGEAHERRL PAGPKVNGTF QADFPPLGPAT HGGTYRCFGS
FHDSPEYWSK SSDPLLVSVT GN

General references:

Steffens, U. *et al.* (1998) *Tissue Antigens* 51, 398-413.

Wagtmann, N.R., *et al.* (1995) *Immunity* 2, 439-449.

Colonna, M. *et al.* (1995) *Science* 269, 405-408;

Kim, J. *et al.* (1997) *J. Immunol.* 159, 3875-3882.

Storage: Can be stored at +4°C short term (1-2 weeks). For long term storage, aliquot and store at -20°C or -70°C. Avoid repeated freezing and thawing cycles.

For research use only. This product is not intended or approved for human, diagnostics or veterinary use.



Manufactured for:

Immuno-Biological Laboratories, Inc. (IBL-America)
8201 Central Ave. NE, Suite P, Minneapolis, Minnesota 55432, USA
Phone: (888) 523-1246 Fax.: (763) 780-2988
Email: info@ibl-america.com Web: www.ibl-america.com