

# Product information



## IRF1, 1-144aa

Human, His-tagged, Recombinant, *E.coli*

Cat. No. IBIRF0702

Size : 100 µg  
Size : 1 mg

**Full name:** Interferon regulatory factor-1

**NCBI Accession No.:** NP\_002189

**Synonyms:** MAR

**Description:** IRF1, Interferon regulatory factor 1, is a member of the interferon regulatory transcription factor (IRF) family which regulates gene expression critical to immune response, hematopoiesis and proliferation. IRF-1 is a transcriptional activator for IFN- $\alpha$ , IFN- $\beta$ , and IFN- $\gamma$  stimulated genes. IRF1 is also a tumor suppressor transcription factor inducing apoptosis of tumorigenic cell lines. Recombinant human IRF1 was expressed in *E.coli* and purified by using conventional chromatography techniques.

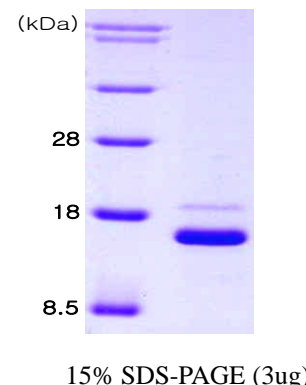
**Form:** Liquid. In 20 mM Tris-HCl buffer (pH 8.0), 10% glycerol

**Molecular Weight:** 15 kDa (134 aa)

**Purity:** > 90% by SDS - PAGE

**Concentration:** 1 mg/ml (determined by Bradford assay)

**Endotoxin Level:** < 1.0 EU per 1 µg of protein (determined by LAL method)



### Sequences of amino acids:

MGSSHHHHHH SGLVPRGSH MPITRMRMP WLEMQINSNQ IPGLIWINKE EMIFQIPWKH AAKHGWDINK DACLFRSWAI HTGRYKAGEK  
EPDPKTWKAN FRCAMNSLPD IEEVKDQSRN KGSSAVRVYR MLPP

### General references:

Hochhaus A., *et al.* (1997) *Leukemia*. **11**(7):933-9.

Liu J., *et al.* (2005) *J Biol Chem*. **280**(26):24347-55

**WARNING: THIS PRODUCT IS NOT INTENDED OR APPROVED FOR HUMAN, DIAGNOSTICS OR VETERINARY USE. USE OF THIS PRODUCT FOR HUMAN OR ANIMAL TESTING IS EXTREMELY HAZARDOUS AND MAY RESULT IN DISEASE, SEVERE INJURY, OR DEATH.**

# Product information

---



**Storage:** Can be stored at +4°C short term (1-2 weeks). For long term storage, aliquot and store at -20°C or -70°C. Avoid repeated freezing and thawing cycles.

**WARNING: THIS PRODUCT IS NOT INTENDED OR APPROVED FOR HUMAN, DIAGNOSTICS OR VETERINARY USE. USE OF THIS PRODUCT FOR HUMAN OR ANIMAL TESTING IS EXTREMELY HAZARDOUS AND MAY RESULT IN DISEASE, SEVERE INJURY, OR DEATH.**