

## DPP4(CD26), 39-766 aa

Human, His-tagged, Recombinant, Insect Cell

Cat. No. IBDPP0901

**Full name:** Dipeptidyl peptidase-4

**NCBI Accession No.:** NP\_001926

**Synonyms:** DPPIV, ADABP, ADCP2, TP103

**Description:** DPP4, dipeptidyl peptidase-4 is a complex enzyme expressed on the surface of most cell types and is a serine exopeptidase that cleaves x-proline dipeptides from the N-terminus of polypeptides. DPP4 protein is associated with intracellular signal transduction, apoptosis and plays an important role in tumor biology. There are at least 63 substrates which can bind specifically to DPP4 enzyme including growth factors, chemokines, neuro peptides. Furthermore, DPP4 plays a major role in glucose metabolism by cleaving incretins such as glucose-dependent insulinotropic polypeptide (GIP) and glucagon-like peptide-1 (GLP-1). Recombinant human DPP4 protein was expressed with c-terminal His-tag in insect cells using baculovirus expression system and purified by using conventional chromatography techniques.

**Form:** Liquid. In 20 mM Tris-HCl buffer (pH 8.0) containing 100 mM NaCl,

1 mM EDTA, 10% glycerol

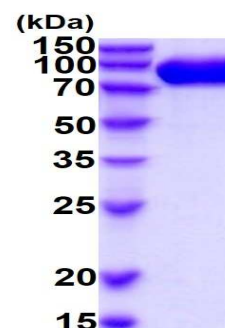
**Molecular Weight:** 85.4kDa (737aa), confirmed by MALDI-TOF

**Purity:** > 95% by SDS - PAGE

**Concentration:** 0.5 mg/ml (determined by Absorbance at 280nm)

**Endotoxin Level:** < 1.0 EU per 1 µg of protein (determined by LAL method)

**Biological activity:** Specific activity is > 200 units/mg, One unit produces 1.0 umole of p-Nitroaniline from Gly-Pro- p-Nitroaniline per minute at pH 8.0 at 37C.



15% SDS-PAGE (3µg)

### Sequences of aminoacids:

ADP — Mature form of DPP-4  
(Ser 39 – Pro 766) — HHHHHH

**For research use only. This product is not intended or approved for human, diagnostics or veterinary use.**



Manufactured for:

Immuno-Biological Laboratories, Inc. (IBL-America)  
8201 Central Ave. NE, Suite P, Minneapolis, Minnesota 55432, USA

Phone: (888) 523-1246

Fax.: (763) 780-2988

Email: [info@ibl-america.com](mailto:info@ibl-america.com)

Web: [www.ibl-america.com](http://www.ibl-america.com)

# Product information

---



## General references:

Pratley RE and Salsali A. (2007) *Curr Med Res Opin.* **23(4)**:919-31

Rosenstock J. and Zinman B. (2007) *Curr Opin Endocrino Diabetes Obes.* **60(11)**:1454-70

Barnett A. (2006). *J.Clin. Pract.* **60(11)**:1454-70

**Storage:** Can be stored at +4°C short term (1-2 weeks). For long term storage, aliquot and store at -20°C or -70°C.

Avoid repeated freezing and thawing cycles.

---

**For research use only. This product is not intended or approved for human, diagnostics or veterinary use.**



*Manufactured for:*

Immuno-Biological Laboratories, Inc. (IBL-America)  
8201 Central Ave. NE, Suite P, Minneapolis, Minnesota 55432, USA

Phone: (888) 523-1246

Fax.: (763) 780-2988

Email: [info@ibl-america.com](mailto:info@ibl-america.com)

Web: [www.ibl-america.com](http://www.ibl-america.com)