

Product information



Biliverdin reductase B_{1-206aa}

Human, Recombinant, *E.coli*

Cat. No. IBBVR0901

Size: 0.5 mg
Size: 100 ug

Synonyms: BLVRB, FLR, BVRB, SDR43U1, MGC117413

NCBI Accession No.: NP_000704.1

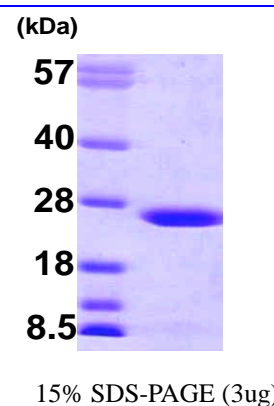
Description: Biliverdin reductase B (BLVRB) is an enzyme (EC 1.3.1.24) that converts biliverdin to bilirubin, converting a double-bond between the second and third pyrrole ring into a single-bond. BLVRB is found that major erythrocytic heme catabolic pathway in humans and most mammalian species. Biliverdin reductase is abundantly expressed in kidney, spleen, liver and brain as well as at lower levels in the thymus and minimal levels being detected in testis. Recombinant BLVRB protein was expressed in *E.coli* and purified by using conventional chromatography techniques.

Form: Liquid in 20mM Tris pH 8.5, 10% glycerol, 1mM DTT

Molecular Weight: 22.1 kDa (206aa)

Purity: > 95% by SDS PAGE

Concentration: 1 mg/ml (determined by Bradford assay)



Sequences of amino acids:

MAVKKIAIFG ATGQTGLTTL AQAQAGYEV TVLVRDSSRL PSEGPRPAHV VVGDLVQAAD VDKTAVAGQDA VIVLLGTRND LSPTTVMSEG
ARNIVAAMKA HGVDKVVACT SAFLLWDPTK VPPRLQAVTD DHIRMHKVL R ESGLKYVAVM PPHIGDQPLT GAYTVTL DGR GPSRVISKHD
LGHFMLRCLT TDEYDGHSTY PSHQYQ

General references:

L. Lee Grismer., *et al.* (2007). *Herpetologica*. 63(3):392-400

Baranano DE., *et al.* (2002). *Proc Natl Acad Sci USA*. 10; 99(25):16093-8

WARNING: THIS PRODUCT IS NOT INTENDED OR APPROVED FOR HUMAN, DIAGNOSTICS OR VETERINARY USE. USE OF THIS PRODUCT FOR HUMAN OR ANIMAL TESTING IS EXTREMELY HAZARDOUS AND MAY RESULT IN DISEASE, SEVERE INJURY, OR DEATH.

Product information



Storage: Can be stored at +4°C short term (1-2 weeks). For long term storage, aliquot and store at -20°C or -70°C. Avoid repeated freezing and thawing cycles.

WARNING: THIS PRODUCT IS NOT INTENDED OR APPROVED FOR HUMAN, DIAGNOSTICS OR VETERINARY USE. USE OF THIS PRODUCT FOR HUMAN OR ANIMAL TESTING IS EXTREMELY HAZARDOUS AND MAY RESULT IN DISEASE, SEVERE INJURY, OR DEATH.