

Product information

ALDOC, 1-364aa

Human, Recombinant, *E.coli*

Cat. No. ATGP3709

Full name: Fructose biphosphate aldolase C

NCBI Accession No.: NP_005156

Synonyms: ALDC

Description: ALDOC, also as known as fructose biphosphate C, is a member of the class 1 fructose-biphosphate aldolase family. This protein is a ubiquitous enzyme that catalyzes the reversible aldol cleavage of fructose-biphosphate and fructose 1-phosphate to dihydroxyacetone phosphate and either glyceraldehyde-3-phosphate or glyceraldehyde, respectively. It is expressed specifically in the hippocampus and Purkinje cells of the brain. Recombinant human ALDOC was expressed in *E.coli* and purified by using conventional chromatography techniques.

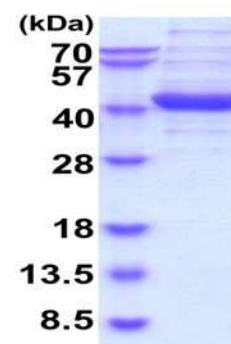
Form: Liquid. In 20mM Tris-HCl (pH8.0) containing 20% Glycerol, 2mM DTT, 0.1M NaCl

Molecular Weight: 39.4 kDa (364aa) confirmed by MALDI-TOF

Purity: > 90% by SDS-PAGE

Concentration: 1 mg/ml (determined by Bradford assay)

Biological activity: Specific activity is > 6 units/mg, one unit will convert 1.0 umol of fructose 1,6-diphosphate to dihydroxyacetone phosphate and glyceraldehydes 3- phosphate per minute at pH 7.5 at 37C.



15% SDS-PAGE (3ug)

Sequences of amino acids:

MPHSPALSA EQKELSDIA LRIVAPGKGI LADESVMGSM AKRLSQIGVE NTEENRRLYR QVLFSAADDRV KKCIGGVIFV HETLYQKDDN
 GVPFVRTIQD KGI VVG I KVD KGVVPLAGTD GETTQGLDG LSERCAQYKK DGADFAKWRC VLKISERTPS ALAILENANV LARYASICQQ
 NGIVPIVEPE ILPDGDHDLK RCQYVTEKVL AAVYKALSDH HVYLEGTLK PNMVTPGHAC PIKYTPPEIA MATVTALRRT VPPAVPGVTF
 LSGGQSEEEA SFNLNAINRC PLPRPWALTF SYGRALQASA LNAWRGQRDN AGAATEEFIK RAEVNGLAAQ GKYEGSGEDG GAAQSLYIA
 NHAY

General references:

Caspi M., *et al.* (2014) *Mol Cancer*. 13:164.

Arakaki TL., *et al.* (2004) *Protein Sci*. 13(12): 3077-84

For research use only. This product is not intended or approved for human, diagnostics or veterinary use.



Manufactured for:

Immuno-Biological Laboratories, Inc. (IBL-America)
 8201 Central Ave. NE, Suite P, Minneapolis, Minnesota 55432, USA

Phone: (888) 523-1246 Fax.: (763) 780-2988

Email: info@ibl-america.com Web: www.ibl-america.com

Product information

Storage: Can be stored at +4°C short term (1-2 weeks). For long term storage, aliquot and store at -20°C or -70°C.
Avoid repeated freezing and thawing cycles.

For research use only. This product is not intended or approved for human, diagnostics or veterinary use.



Manufactured for:

Immuno-Biological Laboratories, Inc. (IBL-America)
8201 Central Ave. NE, Suite P, Minneapolis, Minnesota 55432, USA
Phone: (888) 523-1246 Fax.: (763) 780-2988
Email: info@ibl-america.com Web: www.ibl-america.com