

# Product information

## GPC3, 25-559aa

Human, His-tagged, Recombinant, Insect cell

Cat. No. IBATGP3584

**Full name:** Glypican-3 isoform 2

**NCBI Accession No.:** NP\_004475

**Synonyms:** GPC3, DGSX, GTR2-2, MXR7, OCI-5, SDYS, SGB, SGBS, SGBS1

**Description:** GPC3, also known as glypican-3 isoform 2, is a member of the glypican family. It belongs to the glypican family and is highly expressed in lung, liver, and kidney. Also, it has tissue dependent. In some tissues, it acts as a tumor suppressor gene and an oncofetal protein. This protein is currently regarded as a tumor marker and potential target for immunotherapy. Recombinant human GPC3, fused to His-tag at C-terminus, was expressed in insect cell and purified by using conventional chromatography techniques.

**Form:** Liquid. In Phosphate Buffered Saline (pH 7.4) containing 10% glycerol.

**Molecular Weight:** 61.8kDa (544aa)

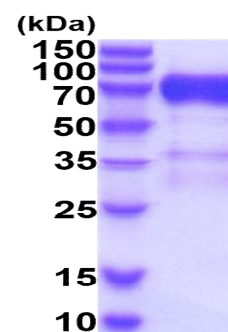
50-70kDa (SDS-PAGE under reducing conditions.)

**Predicted N terminal:** Ala

**Purity:** > 90% by SDS - PAGE.

**Concentration:** 0.5mg/ml (determined by Absorbance at 280nm)

**Endotoxin Level:** < 1.0 EU per 1µg of protein (determined by LAL method)



15% SDS-PAGE (3µg)

### Sequences of amino acids:

ADPQPPPPPP DATCHQVRSF FQRLQPGLKW VPETVPVGS D LQVCLPKGPT CCSRKMEEEKY QLTARLNMEQ LLQSASMELK FLIIQNAAVF  
QEAFEIVVRH AKNYTNAMFK NNYPSTLPQA FEFVGEFFTD VSLYILGSDI NVDDMVNELF DSLFPVIYTQ LMNPGLPDSA LDINECLRGA  
RRDLKVFGNF PKLIMTQVSK SLQVTRIFLQ ALNLGIEVIN TTDHLKFSKD CGRMLTRMWY CSYCQGLMMV KPCGGYCNV V MQGCMAGVVE  
IDKYWREYIL SLEELVNGMY RIYDMENVLL GLFSTIHDSI QYVQKNAGKL TTTIGKLCAH SQQRQYRSAY YPEDLFIDKK VLKVAHVEHE  
ETLSSRRREL IQKLKSFISF YSALPGYICS HSPVAENDTL CWNGQELVER YSQAARNGM KNQFNLHELK MKGPEPVVSQ IIDKLKHINQ  
LLRTSMMPKG RVL DKNLDEE GFESGDCGDD EDECIGGSGD GMIVKVNQLR FLAELAYDLD VDDAPGNSQQ ATPKDNEIST FHN LGNVHHH  
HHHH

**For research use only. This product is not intended or approved for human, diagnostics or veterinary use.**



Manufactured for:

Immuno-Biological Laboratories, Inc. (IBL-America)  
8201 Central Ave. NE, Suite P, Minneapolis, Minnesota 55432, USA

Phone: (888) 523-1246

Fax.: (763) 780-2988

Email: [info@ibl-america.com](mailto:info@ibl-america.com)

Web: [www.ibl-america.com](http://www.ibl-america.com)

# Product information

---

**General references:**

Feng J., *et al*, (2016) *PLoS ONE* 11:E0151501.

Davoodi J., *et al*, (2007) *Proteomics* 7:2300-2310.

**Storage:** Can be stored at +4°C short term (1-2 weeks). For long term storage, aliquot and store at -20°C or -70°C.  
Avoid repeated freezing and thawing cycles.

---

**For research use only. This product is not intended or approved for human, diagnostics or veterinary use.**



*Manufactured for:*

Immuno-Biological Laboratories, Inc. (IBL-America)  
8201 Central Ave. NE, Suite P, Minneapolis, Minnesota 55432, USA  
Phone: (888) 523-1246 Fax.: (763) 780-2988  
Email: [info@ibl-america.com](mailto:info@ibl-america.com) Web: [www.ibl-america.com](http://www.ibl-america.com)