

Product information

PPP1CC, 1-323aa

Human, His-tagged, Recombinant, *E.coli*

Cat. No. IBATGP3561

Full name: Serine/threonine-protein phosphatase PP1-gamma catalytic subunit

Synonyms: PP1gamma, PPP1G

NCBI Accession No.: NP_002701

Description: PPP1CC, also known as serine/threonine-protein phosphatase PP1-gamma catalytic subunit, is essential for cell division, and participates in the regulation of glycogen metabolism, muscle contractility and protein synthesis. This protein is involved in regulation of ionic conductances and long-term synaptic plasticity and may play an important role in dephosphorylating substrates such as the postsynaptic density-associated Ca²⁺/calmodulin dependent protein kinase II. Recombinant human PPP1CC protein, fused to His-tag at N-terminus, was expressed in *E.coli* and purified by using conventional chromatography.

Form: Liquid. 20mM Tris-HCl buffer (pH8.0) containing 50% glycerol,

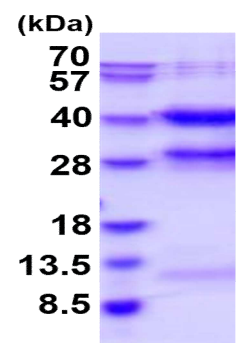
0.2M NaCl, 2mM DTT

Molecular Weight: 39.1 kDa (343aa), confirmed by MALDI-TOF

Purity: > 85% by SDS - PAGE

Concentration: 0.25 mg/ml (determined by Bradford assay)

Biological activity: Specific activity is > 700 units/mg, and is defined as the amount of enzyme that hydrolyze 1.0 nmole of p-nitrophenyl phosphate (pNPP) per minute at pH 7.5 at 37C.



15% SDS-PAGE (3ug)

Sequences of amino acids:

MGSSHHHHHH SSGLVPRGSH MADLDKLNID SIIQRLLLEVR GSKPGKNVQL QENEIRGLCL KSREIFLSQP ILLELEAPLK ICGDIHGQYY
 DLLRLFEYGG FPPESNYLF LDYVDRGKQS LETICLLLAY KIKYPENFFL LRGNHECASI NRIYGFYDEC KRRYNIKLWK TFTDCFNCLP
 IAAIVDEKIF CCHGGLSPDL QSMEQIRIRIM RPTDVPDQGL LCDLLWSDPD KDVLGWGEND RGVSTFTGAE VVAKFLHKHD LDLICRAHQV
 VEDGYEFFAK RQLVTLFSAP NYCGEFDNAG AMMSVDETLM CSFQILKPAE KKKPNATRPV TPRGMITKQ AKK

General references:

Egloff M.-P., *et al.* (1995) *J. Mol. Biol.* 254:942-959

Choudhary C., *et al.* (2009) *Science.* 325:834-840

For research use only. This product is not intended or approved for human, diagnostics or veterinary use.

Product information

Storage: Can be stored at +4°C short term (1-2 weeks). For long term storage, aliquot and store at -20°C or -70°C.
Avoid repeated freezing and thawing cycles.

For research use only. This product is not intended or approved for human, diagnostics or veterinary use.



Manufactured for:

Immuno-Biological Laboratories, Inc. (IBL-America)
8201 Central Ave. NE, Suite P, Minneapolis, Minnesota 55432, USA
Phone: (888) 523-1246 Fax.: (763) 780-2988
Email: info@ibl-america.com Web: www.ibl-america.com