

# Product information

## CD2, 25-209aa

Human, His-tagged, Recombinant, Insect cell

Cat. No. IBATGP3519

**Full name:** T-cell surface antigen CD2

**NCBI Accession No.:** NP\_001758

**Synonyms:** CD2, LFA-2, SRBC, T11

**Description:** CD2, also known as T-cell surface antigen CD2, is a cell adhesion molecule found on the surface of T cells and natural killer (NK) cells. It interacts with other adhesion molecules, such as lymphocyte function-associated antigen-3 (LFA-3/CD58) in humans, or CD48 in rodents. CD2 is a specific marker for T cells and NK cells. The great majority of T cell lymphomas and leukaemias also express CD2, making it possible to use the presence of the antigen to distinguish these conditions from B cell neoplasms. Recombinant human CD2 protein, fused to His-tag at C-terminus, was expressed in insect cell and purified by using conventional chromatography techniques.

**Form:** Liquid. In Phosphate Buffered Saline (pH 7.4) containing 10% glycerol.

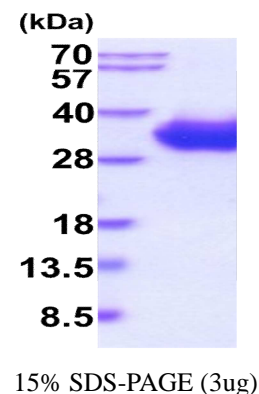
**Molecular Weight:** 22.3kDa (194aa)  
28-40kDa (SDS-PAGE under reducing conditions.)

**Predicted N terminal:** Ala

**Purity:** > 95% by SDS - PAGE.

**Concentration:** 0.5mg/ml (determined by Absorbance at 280nm)

**Endotoxin Level:** < 1.0 EU per 1µg of protein (determined by LAL method)



### Sequences of amino acids:

ADPKEITNAL ETWGALGQDI NLDIPSFQMS DDIDDIKWEK TSDKKKIAQF RKEKETFKEK DTYKLFKNGT LKIKHLKTDD QDIYKVSIIYD  
TKGKNVLEKI FDLKIQERVS KPKISWTCIN TTLTCEVMNG TPELNLYQD GKHLKLSQRV ITHKWTTLS AKFKCTAGNK VSKESSVEPV  
SCPEKGLDHH HHHH

### General references:

Meinl E., *et al.* (2000) *J Immunol.* 165: 3578-3583.

Kalland ME., *et al.* (2011) *J Immunol.* 187: 5233-45.

**Storage:** Can be stored at +4°C short term (1-2 weeks). For long term storage, aliquot and store at -20°C or -70°C.

Avoid repeated freezing and thawing cycles.

**For research use only. This product is not intended or approved for human, diagnostics or veterinary use.**