

# Product information

## ALCAM, 28-527aa

Human, hlgG-His-tagged, Recombinant, Insect cell

Cat. No. IBATGP3516

**Full name:** CD166 antigen isoform 2

**NCBI Accession No.:** NP\_001230209

**Synonyms:** ALCAM, CD166, MEMD

**Description:** ALCAM, as known as CD166 antigen isoform 2, is a type 1 membrane glycoprotein and a member of the immunoglobulin superfamily. It is expressed on thymic epithelium, microvascular endothelium, activated lymphocytes and monocytes, and monocyte-derived dendritic cells. This protein and CD6 interaction plays a role in T cell development and T cell regulation, as well as in the binding of T cells and B cells to activated leukocytes. Recombinant human ALCAM, fused to hlgG-His-tag at C-terminus, was expressed in insect cell and purified by using conventional chromatography techniques.

**Form:** Liquid. In Phosphate Buffered Saline (pH 7.4) containing 10% glycerol.

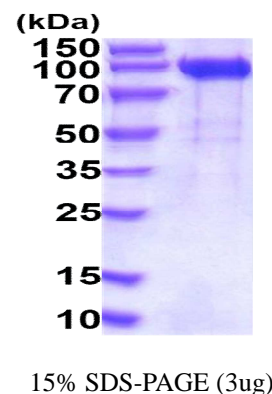
**Molecular Weight:** 83.1kDa (742aa)  
70-100kDa (SDS-PAGE under reducing conditions.)

**Predicted N terminal:** Ala

**Purity:** > 90% by SDS - PAGE.

**Concentration:** 0.25mg/ml (determined by Absorbance at 280nm)

**Endotoxin Level:** < 1.0 EU per 1µg of protein (determined by LAL method)



### Sequences of amino acids:

ADPWYTVNSA YGDTIIPCR LDVPQNL MFG KWKYEKPDGS PVFIAFRSST KKSQVYDDVP EYKDRNLNLS NYTLSISNAR ISDEKRFVCM  
 LVTEDNVFEA PTIVKVKQP SKPEIVSKAL FLETEQLKKL GDCISEDSYP DGNITWYRNG KVLHPLEGAV VIFKKEMDP VTQLYTMST  
 LEYKTTKADI QMPFTCSVTY YGSPGQKTIH SEQAVFDIYY PTEQVTIQLV PPKNAIKEGD NITLTKCLNG NPPPEEFLFY LPGQPEGIRS  
 SNTYTLTDVR RNATGDYKCS LIDKKSMIAS TAITVHYLDL SLNPSGEVTR QIGDALPVSC TISASRNATV WWMKDNIRLR SSPSFSSLHY  
 QDAGNYVCET ALQEVEGLKK RESLTLIVEG KPQIKMTKKT DPSGLSKTII CHVEGFPA IQWTITGSGS VINQTEESPY INGRYYSKII  
 ISPEENVTLT CTAENQLERT VNSLNVSANE NREKVNDAQK LIVGIVVGLL LAALPEPKSCD KTHTCPPCPA PELLGGPSVF LFPPKPKDTL  
 MISRTPEVTC VVVDVSHEDP EVKFNWYVDG VEVHNAKTKP REEQYNSTYR VVSVLTVLHQ DWLNGKEYKC KVS NKALPAP IEKTI SKAKG  
 QPREPQVYTL PPSRDELTKN QVSLTCLVKG FYPSDIAVEW ESNGQPENNY KTTPLVLDSD GSFFLYSKLT VDKSRWQQGN VFSCSVMHEA  
 LHNHYTQKSL SLSPGKHHHH HH

**For research use only. This product is not intended or approved for human, diagnostics or veterinary use.**

# Product information

---

**General references:**

Donizy P., *et al*, (2015) *Diagn Pathol*. 10:86.

Tang X., *et al*, (2015) *Cell. Signal*. 27:1694-1702.

**Storage:** Can be stored at +4°C short term (1-2 weeks). For long term storage, aliquot and store at -20°C or -70°C.  
Avoid repeated freezing and thawing cycles.

---

**For research use only. This product is not intended or approved for human, diagnostics or veterinary use.**



*Manufactured for:*

Immuno-Biological Laboratories, Inc. (IBL-America)

8201 Central Ave. NE, Suite P, Minneapolis, Minnesota 55432, USA

Phone: (888) 523-1246

Fax.: (763) 780-2988

Email: [info@ibl-america.com](mailto:info@ibl-america.com)

Web: [www.ibl-america.com](http://www.ibl-america.com)