

Product information

ATP1B1, 63-303aa

Human, His-tagged, Recombinant, Insect cell

Cat. No. IBATGP3507

Full name: ATPase Na⁺/K⁺ transporting subunit beta 1

NCBI Accession No.: NP_001668

Synonyms: ATP1B1, ATP1B

Description: ATP1B1, also known as ATPase Na⁺/K⁺ transporting subunit beta 1, belongs to the family of Na⁺/K⁺ and H⁺/K⁺ ATPases beta chain proteins, and to the subfamily of Na⁺/K⁺ -ATPases. Na⁺/K⁺ -ATPase is an integral membrane protein responsible for establishing and maintaining the electrochemical gradients of Na and K ions across the plasma membrane. These gradients are essential for osmoregulation, for sodium-coupled transport of a variety of organic and inorganic molecules, and for electrical excitability of nerve and muscle. The beta subunit regulates, through assembly of alpha/beta heterodimers, the number of sodium pumps transported to the plasma membrane. Recombinant human ATP1B1 protein, fused to His-tag at C-terminus, was expressed in insect cell and purified by using conventional chromatography techniques.

Form: Liquid. In Phosphate Buffered Saline (pH 7.4) containing 10% glycerol.

Molecular Weight: 29.0kDa (250aa)

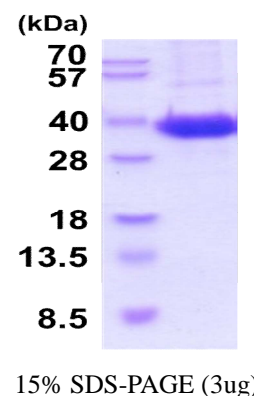
28-40KDa (SDS-PAGE under reducing conditions.)

Predicted N terminal: Ala

Purity: > 90% by SDS - PAGE.

Concentration: 0.5mg/ml (determined by Absorbance at 280nm)

Endotoxin Level: < 1.0 EU per 1µg of protein (determined by LAL method)



Sequences of amino acids:

ADPEFKPTYQ DRVAPPGLTQ IPQIQKTEIS FRPNPKSYE AYVLNIVRFL EKYKDSAQRD DMIFEDCGDV PSEPKERGDF NHERGERKVC
RFKLEWLGN C SGLNDETYGY KEGKPCIIK LNRVLGFKPK PPKNESLETY PVMKYNPNVL PVQCTGKRDE DKDKVGNVEY FGLGNSPGFP
LQYYPPYGGK LQPKYLQPLL AVQFTNL TMD TEIRIECKAY GENIGYSEKD RFQGRFDVKI EVKSHHHHHH

General references:

Selvakumar P. *et al.*, (2014) *Pathol. Int.* 9:579-586.

For research use only. This product is not intended or approved for human, diagnostics or veterinary use.



Manufactured for:

Immuno-Biological Laboratories, Inc. (IBL-America)
8201 Central Ave. NE, Suite P, Minneapolis, Minnesota 55432, USA

Phone: (888) 523-1246

Fax.: (763) 780-2988

Email: info@ibl-america.com

Web: www.ibl-america.com

Product information

Shi JL. *et al.*, (2016) *Oncotarget*. 19:2585-2595.

Storage: Can be stored at +4°C short term (1-2 weeks). For long term storage, aliquot and store at -20°C or -70°C.
Avoid repeated freezing and thawing cycles.

For research use only. This product is not intended or approved for human, diagnostics or veterinary use.



Manufactured for:

Immuno-Biological Laboratories, Inc. (IBL-America)
8201 Central Ave. NE, Suite P, Minneapolis, Minnesota 55432, USA
Phone: (888) 523-1246 Fax.: (763) 780-2988
Email: info@ibl-america.com Web: www.ibl-america.com