

Product information

SLAMF6, 22-226aa

Human, His-tagged, Recombinant, Insect cell

Cat. No. IBATGP3483

Full name: SLAMF family member 6 isoform 1

NCBI Accession No.: NP_001171643

Synonyms: SLAMF6, CD352, KALI, KAL1b, Ly108, NTB-A, NTBA, SF2000

Description: SLAMF6, also known as SLAM family member 6 isoform 1, belongs to the SLAM family of immune cell receptors. It is a novel receptor on T cells that, when engaged, potentiates T cell expansion in a CD28-independent manner. This protein is expressed on NK-, T-, and B cells. It undergoes tyrosine phosphorylation and associates with the Src homology 2 domain-containing protein (SH2D1A) as well as with SH2 domain-containing phosphatases (SHPs). It may function as a coreceptor in the process of NK cell activation. Recombinant human SLAMF6 protein, fused to His-tag at C-terminus, was expressed in insect cell and purified by using conventional chromatography techniques.

Form: Liquid. In Phosphate Buffered Saline (pH 7.4) containing 10% glycerol.

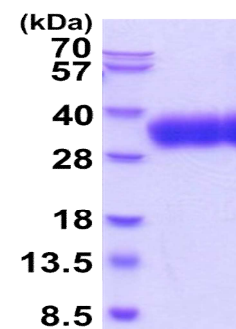
Molecular Weight: 24.1kDa (214aa)
28-40KDa (SDS-PAGE under reducing conditions.)

Predicted N terminal: Ala

Purity: > 95% by SDS – PAGE.

Concentration: 0.5mg/ml (determined by Absorbance at 280nm)

Endotoxin Level: < 1.0 EU per 1µg of protein (determined by LAL method)



15% SDS-PAGE (3µg)

Sequences of amino acids:

ADPQSSLTPL MVNGILGESV TLPLEFPAGE KVNFI TWLFN ETSLAFIVPH ETKSPEIHVT NPKQGKRLNF TQSYSLQLSN LKMEDTGSYR
AQISTKTSAK LSSYTLRILR QLRNIQVTNH SQLFQNMTC E LHLTCSVEDA DDNVSRWEA LGNTLSSQPN LTVSWDPRIS SEQDYTCIAE
NAVSNLSFSV SAQKLCEDVK IQYTDTKMH HHHH

General references:

Aversa G. *et al.*, (1997) *Immunol Cell Biol.* 75:202-205.

Valdez PA. *et al.*, (2004) *J. Biol. Chem.* 279:18662-18669.

Storage: Can be stored at +4°C short term (1-2 weeks). For long term storage, aliquot and store at -20°C or -70°C.
Avoid repeated freezing and thawing cycles.

For research use only. This product is not intended or approved for human, diagnostics or veterinary use.