

# Product information

## LUM, 19-338aa

Human, His-tagged, Recombinant, Insect cell

Cat. No. IBATGP3445

**Full name:** Lumican

**NCBI Accession No.:** NP\_002336

**Synonyms:** LUM, LDC, SLRR2D

**Description:** LUM, also known as lumican, is a member of the class II small leucine-rich proteoglycan family. It is a major component of the cornea, dermal, and muscle connective tissues. It regulates collagenous matrix assembly as a keratan sulfate proteoglycan in the cornea and is also present in the connective tissues of other organs and embryonic corneal stroma as a glycoprotein. It may regulate collagen fibril organization and circumferential growth, corneal transparency, and epithelial cell migration and tissue repair. Recombinant human LUM, fused to His-tag at C-terminus, was expressed in insect cell and purified by using conventional chromatography techniques.

**Form:** Liquid. In Phosphate Buffered Saline (pH 7.4) containing 10% glycerol.

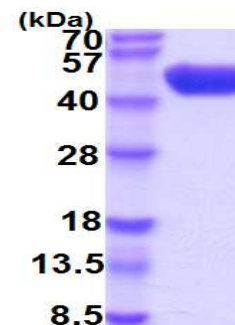
**Molecular Weight:** 37.7kDa (329aa)  
40-57kDa (SDS-PAGE under reducing conditions)

**Predicted N terminal:** Ala

**Purity:** > 95% by SDS – PAGE.

**Concentration:** 0.5mg/ml (determined by Absorbance at 280nm)

**Endotoxin Level:** < 1.0 EU per 1µg of protein (determined by LAL method)



15% SDS-PAGE (3µg)

### Sequences of amino acids:

ADLQYYDYDF PLSIYGQSSP NCAPECNCP E SYPSAMYCDE LKLKSVPMVP PGIKYLYLRN NQIDHIDEKA FENVTDLQWL ILDHNLLENS  
KIKGRVFSKL KQLKKLHINH NNLTESVGPL PKSLEDLQLT HNKITKLG SF EGLVNLTFIH LQHNRLKEDA VSAAFKGLKS LEYLDLSFNQ  
IARLPSGLPV SLLTLYLDNN KISNIPDEYF KRFNALQYLR LSHNELADSG IPGNSFNVSS LVELDLSYNK LKNIPTVNVN LENYYLEVNQ  
LEKFDIKSFC KILGPLSYSK IKHLRLDGNR ISETSLPPDM YECLRVANEV TLNHHHHHH

### General references:

Yamamoto T., *et al.* (2013) *Oncol Rep.* 30:1609-1621.

Saika S., *et al.* (2000) *J Biol Chem.* 275:2607-2612.

**Storage:** Can be stored at +4°C short term (1-2 weeks). For long term storage, aliquot and store at -20°C or -70°C.

Avoid repeated freezing and thawing cycles.

**For research use only. This product is not intended or approved for human, diagnostics or veterinary use.**