

# Product information

## LDHB, 1-334aa

Human, Recombinant, *E.coli*

Cat. No. IBATGP3387

**Full name:** Lactate dehydrogenase B

**NCBI Accession No.:** NP\_002291

**Synonyms:** HEL-S-281, LDH-B, LDH-H, LDHBD, TRG-5

**Description:** LDHB, also known as L-lactate dehydrogenase B chain isoform LDHB, is a member of the lactate dehydrogenase family. It is an oxidoreductase which catalyses the interconversion of pyruvate and lactate with concomitant interconversion of NADH and NAD<sup>+</sup>. As this protein can also catalyze the oxidation of hydroxybutyrate. The LDH family consists of three members, LDH-A, LDH-B and LDH-C. LDHs function as powerful markers for germ cell tumors. Recombinant human LDHB protein was expressed in *E.coli* and purified by using conventional chromatography techniques.

**Form:** Liquid. In 20mM Tris-HCl (pH 8.0) containing 10% glycerol, 1mM DTT

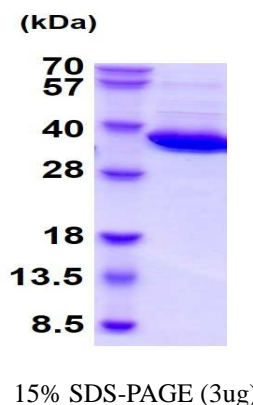
**Molecular Weight:** 36.6kDa (334aa) confirmed by MALDI-TOF

**Purity:** > 90% by SDS - PAGE

**Concentration:** 1mg/ml (determined by Bradford assay)

**Endotoxin Level:** < 1.0 EU per 1 µg of protein (determined by LAL method)

**Biological activity:** Specific activity is > 300 units/mg, in which one unit will convert 1.0 umole of pyruvate to L-lactate and beta-NAD per minute at pH 7.5 at 37C.



### Sequences of amino acids:

MATLKEKLI A PVAEEEEATVP NNKITVVGVG QVGMACAISI LGKSLADELA LVDVLEDKLK GEMMDLQHGS LFLQTPKIVA DKDYSVTANS  
KIVVVTAGVR QQEGESRLNL VQRNVNVFKF IIPQIVKYSP DCIIIVVSNP VDILTYYTWK LSGLPKHRVI GSGCNLDSAR FRYLMAEKL  
IHPSSCHGWI LGEHGDSSVA VWSGVNVAGV SLQELNPEMG TDNDSENWKE VHKNMVESAY EVIKLKGYTN WAIGLSVADL IESMLKNLSR  
IHPVSTMVKG MYGIENEVFL SLPCILNARG LTSVINQKLK DDEVAQLKKS ADTLWDIQKD LKDL

### General references:

Zhao Z., et al. (2015) Cancer Lett. 358(1):17-26.

Martin I., et al. (2014) Cell. 157(2):472-85.

**For research use only. This product is not intended or approved for human, diagnostics or veterinary use.**



Manufactured for:

Immuno-Biological Laboratories, Inc. (IBL-America)  
8201 Central Ave. NE, Suite P, Minneapolis, Minnesota 55432, USA

Phone: (888) 523-1246

Fax.: (763) 780-2988

Email: [info@ibl-america.com](mailto:info@ibl-america.com)

Web: [www.ibl-america.com](http://www.ibl-america.com)

# Product information

---

**Storage:** Can be stored at +4°C short term (1-2 weeks). For long term storage, aliquot and store at -20°C or -70°C.  
Avoid repeated freezing and thawing cycles.

---

**For research use only. This product is not intended or approved for human, diagnostics or veterinary use.**



*Manufactured for:*

Immuno-Biological Laboratories, Inc. (IBL-America)  
8201 Central Ave. NE, Suite P, Minneapolis, Minnesota 55432, USA  
Phone: (888) 523-1246 Fax.: (763) 780-2988  
Email: [info@ibl-america.com](mailto:info@ibl-america.com) Web: [www.ibl-america.com](http://www.ibl-america.com)