

# Product information

## POGLUT1, 24-392aa

Human, His-tagged, Recombinant, Insect cell

Cat. No. IBATGP3356

**Full name:** Protein O-glucosyltransferase 1

**NCBI Accession No.:** NP\_689518

**Synonyms:** POGLUT1, C3orf9, CLP46, hCLP46, KDELCL1, KTELC1

**Description:** POGLUT1, also known as protein O-glucosyltransferase 1, is a homologue of Rumi from *Drosophila*, an endoplasmic reticulum (ER)-retaining glucosyltransferase that adds glucose to serine residues within the consensus sequence of C1-X-S-X-P-C2 in Notch EGF repeats, thereby regulating cell-fate decisions. Recombinant human POGLUT1, fused to His-tag at C-terminus, was expressed in insect cell and purified by using conventional chromatography techniques.

**Form:** Liquid. In Phosphate Buffered Saline (pH 7.4) containing 10% glycerol.

**Molecular Weight:** 44.5kDa (377aa)

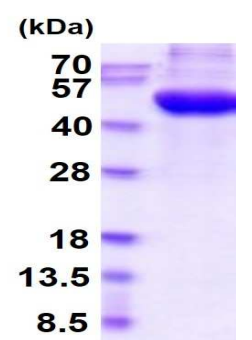
40-57KDa (SDS-PAGE under reducing conditions.)

**Predicted N terminal:** Arg24

**Purity:** > 90% by SDS – PAGE.

**Concentration:** 0.25mg/ml (determined by Absorbance at 280nm)

**Endotoxin Level:** < 1.0 EU per 1µg of protein (determined by LAL method)



15% SDS-PAGE (3µg)

### Sequences of amino acids:

RQKESGSKWK VFIDQINRSL ENYEPCCSQN CSCYHGVEE DLTPFRGGIS RKMAAEVVRK KLGTHYQITK NRLYRENDQM FPSRCSGVEH  
FILEVIGRLP DMEVINVRD YPQVPKWMEP AIPVFSFSKT SEYHDIMYPA WTFWEGGPAV WPIYPTGLGR WDLFREDLVR SAAQWPWKKK  
NSTAYFRGSR TSPERDPLIL LSRKNPKLVD AEYTKNQAWK SMKDTLGKPA AKDVHLVDHC KYKYLNFNRG VAASFRFKHL FLCGSLVFHV  
GDEWLEFFYP QLKPWVHYIP VKTDLNVQEE LLQFVKANDD VAQEIAERGS QFIRNHLQMD DITCYWENLL SEYSKFLSYN VTRRKGQDQI  
IPKMLKTELL\_EHHHHHH

### General references:

Acar M., *et al.* (2008) *Cell* 132:247-258.

Teng Y., *et al.* (2006) *Gene*. 371:7-15.

**Storage:** Can be stored at +4°C short term (1-2 weeks). For long term storage, aliquot and store at -20°C or -70°C.

Avoid repeated freezing and thawing cycles.

**For research use only. This product is not intended or approved for human, diagnostics or veterinary use.**