

# Product information

## Cadherin-related family member 5, 29-641aa

Mouse, His-tagged, Recombinant, Insect cell

Cat. No. IBATGP3285

NCBI Accession No.: NP\_001107794

**Synonyms:** 1810074H01Rik, AI481143, Mucdhl, Mupcdh, Cdhr5

**Description:** CDHR5, also known as cadherin-related family member 5, is a calcium-dependent cell adhesion protein. It is expressed at lateral and basal surfaces of epithelia during kidney and lung development and is located in coated pits. Recombinant mouse CDHR5, fused to His-tag at C-terminus, was expressed in insect cell and purified by using conventional chromatography techniques.

**Form:** Liquid. In Phosphate Buffered Saline (pH 7.4) containing 10% glycerol.

**Molecular Weight:** 66.3kDa (621aa)

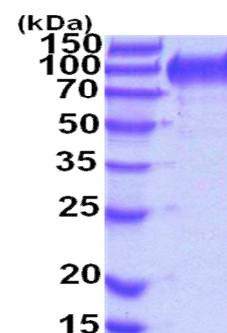
70-100kDa (SDS-PAGE under reducing conditions)

**Predicted N terminal:** Gln29

**Purity:** > 90% by SDS – PAGE.

**Concentration:** 0.25mg/ml (determined by Absorbance at 280nm)

**Endotoxin Level:** < 1.0 EU per 1µg of protein (determined by LAL method)



15% SDS-PAGE (3µg)

### Sequences of amino acids:

QTQVCSVNQT IFRVEENTTV SEPLVNI FVP DGLHVT LGPL STPYAFRI EG KDLFLN VTPD YEENSL LQAD VECKRG DAVV VRLEVF VAVL  
DINDNAPKFS FEIKTFNVSE DTKVNTTVIP ETQLKATDAD INDILVYTLQ EVTPNASKFF SLEGVNYPAL KLDQTL DYFK NQNMTFM LLA  
RDTWEENVEP SHTATATLVL NTLPADLRTP WFLPCSFTDG YVC IHAQYSA VVPTG HKLPS PLIMSPGP IY AVDGDQAINQ SIIYSI IAGN  
TDGTFI INAH DGNLTM TKS I PSPMKFTLLI RADQEDMAQY SVTQA IVEAR SVTGNPLQFS QSLYYGTVVL GSEAGTAVKD KTFPSE I LRI  
QAQYPGFPDL NSAVTYRVTN SSEFMMNKDI MLTAVPMEEA RTIRVEVEAS NVTKDTATA VVEIQVSERE LPSTEFPTPP EAGGTTGPSS  
NTTMEAPLTS GTSQRPATTS SGGSVGPFPF GGTTLRPPTP ASSIPGGSPT LGTSTSPQTT TPGGDSAQTP KPGTSHTAP TSRTSTSLMT  
TSSRS DSTQT PKPGTSQPMV PIPGASTSSQ PATPSGSSPQ TPKPGTSQST ATGPISGAGE QDGGQRFSTV DMALEHHHHH H

### General references:

Goldberg M., *et al.* (2000) *J Biol Chem.* 275:24622-24629.

**Storage:** Can be stored at +4°C short term (1-2 weeks). For long term storage, aliquot and store at -20°C or -70°C.

Avoid repeated freezing and thawing cycles.

**For research use only. This product is not intended or approved for human, diagnostics or veterinary use.**



Manufactured for:

Immuno-Biological Laboratories, Inc. (IBL-America)  
8201 Central Ave. NE, Suite P, Minneapolis, Minnesota 55432, USA

Phone: (888) 523-1246

Fax.: (763) 780-2988

Email: [info@ibl-america.com](mailto:info@ibl-america.com)

Web: [www.ibl-america.com](http://www.ibl-america.com)