

Product information

C-reactive protein, 20-225aa

Mouse, His-tagged, Recombinant, Insect cell

Cat. No. IBATGP3284

NCBI Accession No.: NP_031794

Synonyms: C-reactive protein, pentraxin-related, Crp

Description: CRP, also known as c-reactive protein, is a member of the pentraxin family of proteins. It promotes agglutination, bacterial capsular swelling, phagocytosis and complement fixation through its calcium-dependent binding to phosphorylcholine. Recombinant mouse CRP, fused to His-tag at C-terminus, was expressed in insect cell and purified by using conventional chromatography techniques.

Form: Liquid. In 20mM Tris-HCl buffer (pH 8.0) containing 1mM DTT, 0.1M PMSF, 40% glycerol.

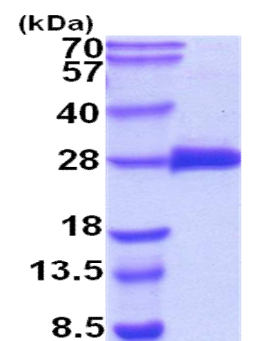
Molecular Weight: 24.1kDa (214aa)
18-28kDa (SDS-PAGE under reducing conditions)

Predicted N terminal: His20

Purity: > 95% by SDS – PAGE.

Concentration: 0.5mg/ml (determined by Absorbance at 280nm)

Endotoxin Level: < 1.0 EU per 1µg of protein (determined by LAL method)



15% SDS-PAGE (3µg)

Sequences of amino acids:

HEDMFKKAFV FPKESDTSYV SLEAESKKPL NTFTVCLHFY TALSTVRSFS VFSYATKKNS NDILIFWNKD KQYTFGVGGA EVRFMVSEIP
EAPTHICASW ESATGIVEFW IDGKPKVRKS LHKGYTVGPD ASIILGQEQD SYGGDFDAKQ SLVGDIGDVN MWDFVLSPEQ ISTVYVGGTL
SPNVLNWRAL NYKAQGDVFI KPQLWSLEHH HHHH

General references:

Pepys MB., *et al.* (2003) *J Clin Invest.* 111:1805-1812.

Thompson D., *et al.* (1999) *Structure.* 7:169-177.

Storage: Can be stored at +4°C short term (1-2 weeks). For long term storage, aliquot and store at -20°C or -70°C.
Avoid repeated freezing and thawing cycles.

For research use only. This product is not intended or approved for human, diagnostics or veterinary use.