

Product information

Cathepsin E, 21-397aa

Mouse, His-tagged, Recombinant, Insect cell

Cat. No. IBATGP3279

NCBI Accession No.: NP_031825

Synonyms: CTSE, A430072003Rik, C920004C08Rik, CatE, CE

Description: CTSE, also known as cathepsin E, belongs to an intracellular aspartic protease of the pepsin family. It plays an important role in the degradation of proteins, the generation of bioactive proteins, and antigen processing. It is efficient in cleaving the Swedish mutant of amyloid precursor protein (APP) at the B site but show almost on reactivity with the wild-type APP. Recombinant mouse CTSE, fused to His-tag at C-terminus, was expressed in insect cell and purified by using conventional chromatography techniques.

Form: Liquid. In Phosphate Buffered Saline (pH 7.4) containing 10% glycerol.

Molecular Weight: 41.8kDa (385aa)

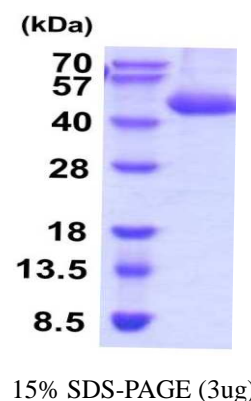
40-57KDa (SDS-PAGE under reducing conditions.)

Predicted N terminal: Ala21

Purity: > 95% by SDS – PAGE.

Concentration: 0.5mg/ml (determined by Absorbance at 280nm)

Endotoxin Level: < 1.0 EU per 1µg of protein (determined by LAL method)



Sequences of amino acids:

ALHRVPLRRH QSLRKKLRAQ GQLSEFWRS NLDMLRLSES CNVYSSVNEP LINYLDMYEF GTISIGTPPQ NPTVIFDTGS SNLWVPSVYC
TSPACKAHVP FHPSQSDTYT EVGNHFSIQY GTGSLTGIIG ADQVSVEGLT VDGQFQGESV KEPGQTFVNA EFDGILGLGY PSIAAGGVTP
VFDNMMAQNL VALPMFSVYL SSDPQGGSGS ELTFGGYDPS HFSGSLNWIP VTKQAYWQIA LDGIQVGDV MFCSEGCQAI VDTGTSLITG
PPDKIKQLQE AIGATPIDGE YAVDCATLDT MPNVTFLINE VSYTLNPTDY ILPDLVEGMQ FCGSGFQGLD IPPPAGPLWI LGDVFIRQFY
SVFDRGNNQV GLAPAVPLEH HHHHH

General references:

Tsukuba T., *et al.* (2000) *Mol. Cells* 10:601-611.

Bennett K., *et al.* (1992) *Eur. J. Immunol.* 22: 1519-1524.

Storage: Can be stored at +4°C short term (1-2 weeks). For long term storage, aliquot and store at -20°C or -70°C.

Avoid repeated freezing and thawing cycles.

For research use only. This product is not intended or approved for human, diagnostics or veterinary use.