

## Angiotensin-converting enzyme 2, 18-740aa

Rat, His-tagged, Recombinant, Insect cell

Cat. No. IBATGP3265

NCBI Accession No.: NP\_001012006

Synonyms: ACE2

**Description:** ACE2, also known as angiotensin-converting enzyme 2, is carboxypeptidase which converts angiotensin I to angiotensin 1-9, a peptide of unknown function, and angiotensin II to angiotensin 1-7, a vasodilator. It is able to hydrolyze apelin-13 and dynorphin-13 with high efficiency and may be an important regulator of heart function. Recombinant rat ACE2, fused to His-tag at C-terminus, was expressed in insect cell and purified by using conventional chromatography techniques.

**Form:** Liquid. In Phosphate Buffered Saline (pH 7.4) containing 10% glycerol.

**Molecular Weight:** 84.7kDa (731aa)

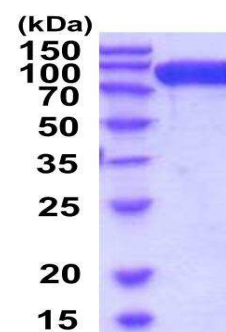
70-100kDa (SDS-PAGE under reducing conditions.)

**Predicted N terminal:** Gln18

**Purity:** > 95% by SDS – PAGE.

**Concentration:** 0.5mg/ml (determined by Absorbance at 280nm)

**Endotoxin Level:** < 1.0 EU per 1µg of protein (determined by LAL method)



15% SDS-PAGE (3µg)

### Sequences of amino acids:

QSLIEEKAES FLNKNQAE DLSYQSSLAS WNYNTNITEE NAQKMNEAAA KWSAFYEEQS KIAQNFSLQE IQNATIKRQL KALQQSGSSA LSPDKNKQLN TILNTMSTIY  
 STGKVCNSMN PQECFLLEPG LDEIMATSTD YNRRLWAWEG WRAEVGKQLR PLYEYVVLK NEMARANNYE DYGDYWRGDY EAEGVEGYNY NRNQLIEDVE NTFKEIKPLY  
 EQLHAYVRTK LMEVYPSYIS PTGCLPAHLL GDMWGRFWTN LYPLTTPFLQ KPNIDVTDAM VNQSWDAERI FKEAEKFFVS VGLPQMTPGF WTNSMLTEPG DDRKVVCHPT  
 AWDLGHGDFR IKMCTKVTMD NFLTAHHEMG HIQYDMAYAK QPFLLRNGAN EGFHEAVGEI MSLSAATPKH LKSIIGLLPSN FQEDNETEIN FLLKQALTIV GTLPFTYMLE  
 KWRWVMVFQDK IPREQWTKKW WEMKREIVGV VEPLPHDETY CDPASLFHVS NDYSFIRYYT RTIYQFQFE ALCQAAKHDG PLHKCDISNS TEAGQKLLNM LSLGNSGPWT  
 LALENVVGSR NMDVKPLLLNY FQPLFVWLKE QNRNSTVGWS TDWSPYADQS IKVRISLKSA LGKNAYEWTD NEMYLFRSSV AYAMREYFSR EKNQTVPFGE ADVWVSDLKP  
 RVSFNFFVTS PKNVSDIIPR SEVEEAIRMS RGRINDIFGL NONSLEFLGI YPTLKPPYEP PVTLEHHHHH H

### General references:

Li W., et al. (2004) *J. Virol.* 78:11429-11433.

Crackower M., A. et al. (2002) *Nature* 417:822-828.

**Storage:** Can be stored at +4°C short term (1-2 weeks). For long term storage, aliquot and store at -20°C or -70°C.

Avoid repeated freezing and thawing cycles.

For research use only. This product is not intended or approved for human, diagnostics or veterinary use.



Manufactured for:

Immuno-Biological Laboratories, Inc. (IBL-America)  
 8201 Central Ave. NE, Suite P, Minneapolis, Minnesota 55432, USA  
 Phone: (888) 523-1246 Fax.: (763) 780-2988  
 Email: [info@ibl-america.com](mailto:info@ibl-america.com) Web: [www.ibl-america.com](http://www.ibl-america.com)