

Product information



Recombinant mouse Bcl-xL protein

Catalog Number: IBATGP3191

PRODUCT INFORMATION

Expression system

E.coli

Domain

1-209aa

UniProt No.

Q64373

NCBI Accession No.

NP_001276645

Alternative Names

Bcl(X)L, bcl-x, bcl-XL, bcl-L-1, bcl2l, bclX, Bcl2l1

PRODUCT SPECIFICATION

Molecular Weight

25.8 kDa (232aa) confirmed by MALDI-TOF

Concentration

1mg/ml (determined by absorbance at 280nm)

Formulation

Liquid in. Phosphate-Buffered Saline (pH 7.4) containing 10% glycerol

Purity

> 95% by SDS-PAGE

Tag

His-Tag

Application

SDS-PAGE

Storage Condition

Can be stored at +2C to +8C for 1 week. For long term storage, aliquot and store at -20C to -80C. Avoid repeated freezing and thawing cycles.

BACKGROUND

Description

BCL2L1 also known as Bcl-2-like protein 1 isoform a. This protein is a member of BCL-2 protein family. BCL2L1 is located at the outer mitochondrial membrane, and have been shown to regulate outer mitochondrial membrane channel (VDAC) opening. Also, BCL2L1 controls a switch between cell death modes during mitotic arrest. Recombinant mouse BCL2L1, fused to His-tag at N-terminus was expressed in E. coli and purified by using conventional chromatography techniques.

For research use only. This product is not intended or approved for human, diagnostics or veterinary use.



Manufactured for:

Immuno-Biological Laboratories, Inc. (IBL-America)

8201 Central Ave. NE, Suite P, Minneapolis, Minnesota 55432, USA

Phone: (888) 523-1246

Fax: (763) 780-2988

Email: info@ibl-america.com

Web: www.ibl-america.com

Product information



Recombinant mouse Bcl-xL protein**b**

Catalog Number: IBATGP3191

Amino acid Sequence

MGSSHHHHHH SSGLVPRGSH MGSMSQSNRE LVVDFLSYKL SQKGYWSWSQF SDVEENRTEA PEETEAERET PSAINGNPS**b**
HLADSPAVNG ATGHSSSLDA REVIPMAAVK QALREAGDEF ELRYRRAFSD LTSQLHITPG TAYQSFEQVV NELFRDGVNW b
GRIVAFFSFG GALCVESVDK EMQVLVSRIA SWMATYLNLDH LEPWIQENGG WDTFVDLYGN NAAAESRKGQ ER

General References

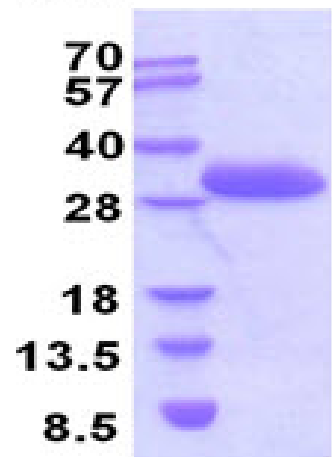
Bah N., et al. (2014) Cell death dis. doi: 10.1038

Yang X F., et al. (1997) Immunity. 7(5): 629-39.

DATA

SDS-PAGE

(kDa)



3ug by SDS-PAGE under reducing condition and visualized by coomassie blue stain.

15% SDS-PAGE (3ug)

For research use only. This product is not intended or approved for human, diagnostics or veterinary use.



Manufactured for:

Immuno-Biological Laboratories, Inc. (IBL-America)
8201 Central Ave. NE, Suite P, Minneapolis, Minnesota 55432, USA

Phone: (888) 523-1246

Fax.: (763) 780-2988

Email: info@ibl-america.com

Web: www.ibl-america.com