

# Product information

## RPRD1B, 1-326aa

Human, His-tagged, Recombinant, *E.coli*

Cat. No. IBATGP3048

**Full name:** Regulation of nuclear pre-mRNA domain-containing protein 1B **NCBI Accession No.:** NP\_067038

**Synonyms:** C20orf77, CREPT, dJ1057B20.2, NET60

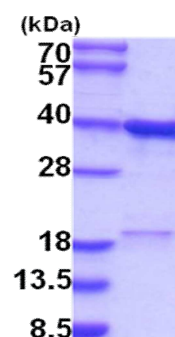
**Description:** RPRD1B also known as regulation of nuclear pre-mRNA domain-containing protein 1B. This protein interacts with phosphorylated C-terminal heptapeptide repeat domain (CTD) of the largest RNA polymerase II subunit POLR2A, and participates in dephosphorylation of the CTD. It promotes binding of RNA polymerase II to the CCDN1 promoter and to the termination region before the poly-A site but decreases its binding after the poly-A site. It prevents RNA polymerase II from reading through the 3' end termination site and may allow it to be recruited back to the promoter through promotion of the formation of a chromatin loop. It also enhances the transcription of a number of other cell cycle-related genes including CDK2, CDK4, CDK6 and cyclin-E but not CDKN1A, CDKN1B or cyclin-A. It promotes cell proliferation. Recombinant human RPRD1B, fused to His-tag at N-terminus, was expressed in *E.coli* and purified by using conventional chromatography techniques.

**Form:** Liquid, In Phosphate buffered saline (pH7.4) containing 20% glycerol, 1mM DTT

**Molecular Weight:** 39.3kDa (349aa) confirmed by MALDI-TOF

**Purity:** > 90% by SDS - PAGE

**Concentration:** 1mg/ml (determined by Bradford assay)



15% SDS-PAGE (3ug)

### Sequences of amino acids:

MGSSHHHHH SSGLVPRGSH MGSMSSES ALEKKLSELS NSQQSVQTL S LWLIHHRKHA GPIVSVWHRE LRKAKSNRKL TFLYLANDVI  
QNSKRKGPEF TREFESVLVD AFSHVAREAD EGCKKPLERL LNIWQERSVY GGEFIQQLKL SMEDSKSPPP KATEEKKSLK RTFQQIQEEE  
DDYPGYSYP QDPSAGPLLT EELIKALQDL ENAASGDATV RQKIASLPQE VQDVSLEKI TDKEAAERLS KTVDEACLLL AEYNGRLAAE  
LEDRRLARM LVEYTQNKQD VLSEKEKKLE EYKQKLARVT QVRKELKSHI QSLPDL SLLP NVTGGLAPLP SAGDLFSTD

### General references:

Lu D., *et al.* (2012) *Cancer Cell* 21:92-104

**Storage:** Can be stored at +4°C short term (1-2 weeks). For long term storage, aliquot and store at -20°C or -70°C.  
Avoid repeated freezing and thawing cycles

**For research use only. This product is not intended or approved for human, diagnostics or veterinary use.**



Manufactured for:  
Immuno-Biological Laboratories, Inc. (IBL-America)  
8201 Central Ave. NE, Suite P, Minneapolis, Minnesota 55432, USA  
Phone: (888) 523-1246 Fax: (763) 780-2988  
Email: [info@ibl-america.com](mailto:info@ibl-america.com) Web: [www.ibl-america.com](http://www.ibl-america.com)