

# Product information

**BRAF, 432-766aa**

**Human, His-tagged, Recombinant, *E.coli***

**Cat. No. IBATGP2924**

**Full name:** Serine/threonine-protein kinase B-raf

**NCBI Accession No.:** NP\_004324

**Synonyms:** B-RAF1, BRAF1, NS7, RAFB1

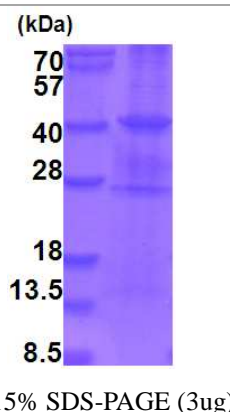
**Description:** BRAF belongs to the raf/mil family of serine/threonine protein kinases. This protein plays a role in regulating the MAP kinase/ERKs signaling pathway, which affects cell division, differentiation, and secretion. Mutations in this gene are associated with cardiofaciocutaneous syndrome, a disease characterized by heart defects, mental retardation and a distinctive facial appearance. Mutations in this gene have also been associated with various cancers, including non-Hodgkin lymphoma, colorectal cancer, malignant melanoma, thyroid carcinoma, non-small cell lung carcinoma, and adenocarcinoma of lung. A pseudogene, which is located on chromosome X, has been identified for this gene. Recombinant human BRAF protein, fused to His-tag at N-terminus, was expressed in *E.coli*.

**Form:** Liquid, In 20mM Tris-HCl (pH8.0) containing 10% glycerol

**Molecular Weight:** 40.6 kDa (360aa)

**Purity:** > 80% by SDS - PAGE

**Concentration:** 0.25 mg/ml (determined by Bradford assay)



**Sequences of amino acids:**

MGSSHHHHH SSGLVPRGSH MGSEFSEDRN RMKTLGRRDS SDDWEIPDGQ ITVGQRIGSG SFGTVYKQKW HGDVAVKMLN VTAPTQQQLQ  
AFKNEGVLR KTRHVNILLF MGYSTKPQLA IVTQWCEGSS LYHHLHIET KFEMIKLIDI ARQTAQGMDY LHAKSIHRD LKSNNIFLHE  
DLTVKIGDFG LATVKSRSWG SHQFEQLSGS ILWMAPEVIR MQDKNPYSFQ SDVYAFGIVL YELMTGQLPY SNINNRDQII FMVGRGYLSP  
DLSKVRSNCP KAMKRLMAEC LKKKRDERPL FPQILASIEL LARSLPKIHR SASEPSLNRA GFQTEDFS LY ACASPKTPIQ AGGYGAFPVH

**General references:**

Brennan D.F., *et al.* (2011) *Nature* 472:366-369

**Storage:** Can be stored at +4°C short term (1-2 weeks). For long term storage, aliquot and store at -20°C or -70°C.  
Avoid repeated freezing and thawing cycles

**For research use only. This product is not intended or approved for human, diagnostics or veterinary use.**