

# Product information

## UBE2G1, 1-170aa

Human, His-tagged, Recombinant, *E.coli*

Cat. No. IBATGP2890

**Full name:** Ubiquitin-conjugating enzyme E2G 1

**NCBI Accession No.:** NP\_003333

**Synonyms:** E217K, UBC7, UBE2G

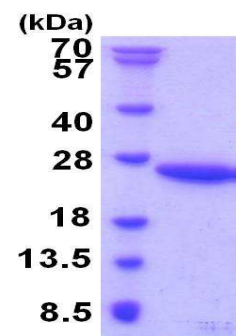
**Description:** The modification of proteins with ubiquitin is an important cellular mechanism for targeting abnormal or short-lived proteins for degradation. Ubiquitination involves at least three classes of enzymes: ubiquitin-activating enzymes, or E1s, ubiquitin-conjugating enzymes, or E2s, and ubiquitin-protein ligases, or E3s. UBE2G1 is a member of the E2 ubiquitin-conjugating enzyme family and catalyzes the covalent attachment of ubiquitin to other proteins. The protein may be involved in degradation of muscle-specific proteins. Recombinant human UBE2G1 protein, fused to His-tag at N-terminus, was expressed in *E.coli* and purified by using conventional chromatography techniques.

**Form:** Liquid. In Phosphate buffered saline (pH7.4) containing, 30% glycerol, 1mM DTT

**Molecular Weight:** 21.9kDa (193aa) confirmed by MALDI-TOF

**Purity:** > 95% by SDS - PAGE

**Concentration:** 0.5 mg/ml (determined by Bradford assay)



15% SDS-PAGE (3ug)

### Sequences of amino acids:

MGSSHHHHH SSGLVPRGSH MGSMTQLQA LLLRRQLAEL NKNPVEGFSA GLIDDNDLYR WEVLIIGPPD TLYEGGVFKA HLTFFPKDYPL  
RPPKMKFITE IWHPNVDKNG DVCISILHEP GEDKYGYEKP EERWLPHTV ETIMISVISM LADPNGDSPA NVDAAKEWRE DRNGEFKRKV  
ARCVRSQET AFE

### General references:

Shibata, E., *et al.* (2011) *Mol. Cell. Biol.* 31 (15), 3136-3145

Hassink, G., *et al.* (2005) *Biochem. J.* 388 (PT 2), 647-655

**Storage:** Can be stored at +4°C short term (1-2 weeks). For long term storage, aliquot and store at -20°C or -70°C.

Avoid repeated freezing and thawing cycles.

**For research use only. This product is not intended or approved for human, diagnostics or veterinary use.**