

# Product information

## HDGFL1, 1-251aa

Human, His-tagged, Recombinant, *E.coli*

Cat. No. IBATGP2881

**Full name:** Hepatoma-derived growth factor-like protein 1

**NCBI Accession No.:** NP\_612641

**Synonyms:** DJ309H15.1, PWWP1

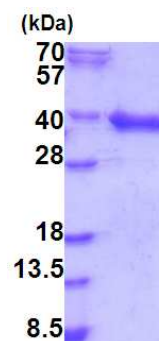
**Description:** HDGFL1 belongs to the HDGF family and contains 1 PWWP domain. Recombinant human HDGFL1 protein, fused to His-tag at N-terminus, was expressed in *E.coli* and purified by using conventional chromatography techniques.

**Form:** Liquid, In Phosphate buffered saline (pH7.4) containing  
10% glycerol

**Molecular Weight:** 29.6 kDa (274aa) confirmed by MALDI-TOF  
(Molecular size on SDS-PAGE will appear higher)

**Purity:** > 95 % by SDS - PAGE

**Concentration:** 0.25 mg/ml (determined by Bradford assay)



15% SDS-PAGE (3ug)

### Sequences of amino acids:

MGSSHHHHHH SSGLVPRGSH MGSMSAYGMP MYKSGDLVFA KLKGYAHWPA RIEHMTQPNR YQVFFFGTHE TAFLSPKRLF PYKECKEKFG  
KPNKRRGFSA GLWEIENNPT VQASDCPLAS EKGSGDGPWP EPEAAEGDED KPTHAGGGGD ELGKPDDDKP TEEKGPLKR SAGDPPEDAP  
KRPKEAAPDQ EEEAEAERAA EAERAAAAA ATAVDEESPF LVAVENGSA SEPGLVCEPP QPEEEELREE EVADEEASQE WHAEAPGGGD  
RDSL

### General references:

Ota T., et al. (2004) *Nat. Genet.* 36:40-45

**Storage:** Can be stored at +4°C short term (1-2 weeks). For long term storage, aliquot and store at -20°C or -70°C.  
Avoid repeated freezing and thawing cycles

**For research use only. This product is not intended or approved for human, diagnostics or veterinary use.**