

Product Information

Recombinant human CD300E protein

Catalog Number: IBATGP2862



PRODUCT INFORMATION

Expression system

E.coli

Domain

18-173aa

UniProt No.

Q496F6

NCBI Accession No.

NP_852114.2

Alternative Names

CMRF35-like molecule 2 precursor, CD300LE, CLM-2, CLM2, CMRF35-A5, IREM-2, IREM2, PlgR-2, PlgR2

PRODUCT SPECIFICATION

Molecular Weight

19.9 kDa (179aa)

Concentration

1mg/ml (determined by Bradford assay)

Formulation

Liquid in. 20mM Tris-HCl buffer (pH 8.0) containing 10% glycerol, 0.4M Urea

Purity

>85% by SDS-PAGE

Tag

His-Tag

Application

SDS-PAGE, Denatured

Storage Condition

Can be stored at +2C to +8C for 1 week. For long term storage, aliquot and store at -20C to -80C. Avoid repeated freezing and thawing cycles.

BACKGROUND

Description

CMRF35-like molecule 2 precursor, also known as CD300E, is a 205 amino acid single-pass type I membrane protein that contains one Ig-like V-type (immunoglobulin-like) domain and belongs to the CD300 family. Interacting with DAP12, CD300E most likely functions as an activating receptor. CD300E is present on the surface of mature hematopoietic cells of the monocyte and myeloid lineages. Recombinant human CD300E protein, fused to His-tag at N-terminus, was expressed in E. coli.

For research use only. This product is not intended or approved for human, diagnostics or veterinary use.



Manufactured for:

Immuno-Biological Laboratories, Inc. (IBL-America)

8201 Central Ave. NE, Suite P, Minneapolis, Minnesota 55432, USA

Phone: (888) 523-1246

Fax: (763) 780-2988

Email: info@ibl-america.com

Web: www.ibl-america.com

Product Information



Recombinant human CD300E protein

Catalog Number: IBATGP2862

Amino acid Sequence

<MGSSHHHHHH SSGLVPRGSH MGS>LKGPGSV TGTAGDSLTV WCQYESMYKG YNKYWCRGQY DTSCESIVET
KGEEKVERNG RVSIRDHPEA LAFTVTMQNL NEDDAGSYWC KIQTVWVLDL WSRDPSDLVR VYVSPAITTP RRTTHPATPP
IFLVVNPGRN LSTGEVLTQN SGFRLSSPH

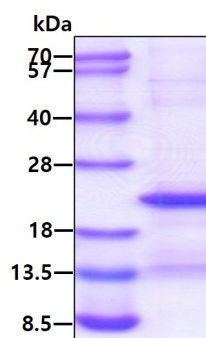
General References

Clark G J., et al. (2009) Immunobiology. 214: 730-736.

Clark G J., et al. (2009) Trends Immunol. 30: 209-217.

DATA

SDS-PAGE



3ug by SDS-PAGE under reducing condition and visualized by coomassie blue stain.

For research use only. This product is not intended or approved for human, diagnostics or veterinary use.



Manufactured for:
Immuno-Biological Laboratories, Inc. (IBL-America)
8201 Central Ave. NE, Suite P, Minneapolis, Minnesota 55432, USA
Phone: (888) 523-1246 Fax.: (763) 780-2988
Email: info@ibl-america.com Web: www.ibl-america.com