

Product information

RPL35, 1-123aa

Human, His-tagged, Recombinant, *E.coli*

Cat. No. IBATGP2836

Full name: Ribosomal protein L35

NCBI Accession No.: NP_009140

Synonyms: L35

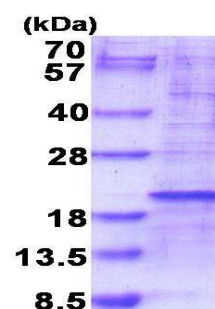
Description: Ribosomes, the organelles that catalyze protein synthesis, consist of a small 40S subunit and a large 60S subunit. Together these subunits are composed of 4 RNA species and approximately 80 structurally distinct proteins. RPL35 is a ribosomal protein that is a component of the 60S subunit. The protein belongs to the L29P family of ribosomal proteins. It is located in the cytoplasm. As is typical for genes encoding ribosomal proteins, there are multiple processed pseudogenes of this gene dispersed through the genome. Recombinant human RPL35 protein, fused to His-tag at N-terminus, was expressed in *E.coli*.

Form: Liquid. In 20mM Tris-HCl buffer (pH 8.0) containing 10% glycerol

Molecular Weight: 16.9 kDa (146aa)

Purity: > 80% by SDS - PAGE

Concentration: 0.25 mg/ml (determined by Bradford assay)



15% SDS-PAGE (3ug)

Sequences of amino acids:

MGSSHHHHH SSSLVPRGSH MGSMKIKAR DLRGKKKEEL LKQLDDLKVE LSQLRVAKVT GGAASKLSKI RVVRKSIARV LTVINQTKQE
NLRKFYKGGK YKPLDLRPKK TRAMRRRLNK HEENLKTKKQ QRKERLYPLR KYAVKA

General references:

Odintsova T.I., *et al.* (2003) *J. Protein Chem.* 22:249-258

Choudhary C., *et al.* (2009) *Science.* 325:834-840

Storage: Can be stored at +4°C short term (1-2 weeks). For long term storage, aliquot and store at -20°C or -70°C.
Avoid repeated freezing and thawing cycles.

For research use only. This product is not intended or approved for human, diagnostics or veterinary use.



Manufactured for:
Immuno-Biological Laboratories, Inc. (IBL-America)
8201 Central Ave. NE, Suite P, Minneapolis, Minnesota 55432, USA
Phone: (888) 523-1246 Fax.: (763) 780-2988
Email: info@ibl-america.com Web: www.ibl-america.com