

Product information



DUSP6, 1-381aa

Human, His-tagged, Recombinant, *E.coli*

Cat. No. IBATGP2774

Full name: Dual specificity phosphatase 6 isoform a

NCBI Accession No.: NP_001937

Synonyms: MKP3, PYST1

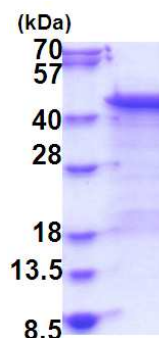
Description: DUSP6 is a member of the dual specificity protein phosphatase subfamily. These phosphatases inactivate their target kinases by dephosphorylating both the phosphoserine/threonine and phosphotyrosine residues. They negatively regulate members of the mitogen-activated protein (MAP) kinase superfamily (MAPK/ERK, SAPK/JNK, p38), which are associated with cellular proliferation and differentiation. Different members of the family of dual specificity phosphatases show distinct substrate specificities for various MAP kinases, different tissue distribution and subcellular localization, and different modes of inducibility of their expression by extracellular stimuli. Recombinant human DUSP6 protein, fused to His-tag at N-terminus, was expressed in *E.coli* and purified by using conventional chromatography techniques.

Form: Liquid. In 20mM Tris-HCl buffer (pH 8.0) containing 0.15M NaCl,
10% glycerol, 1mM DTT

Molecular Weight: 44.4 kDa (401aa) confirmed by MALDI-TOF

Purity: > 85% by SDS - PAGE

Concentration: 0.25 mg/ml (determined by Bradford assay)



15% SDS-PAGE (3ug)

Sequences of amino acids:

MGSSHHHHH SSGLVPRGSH MIDTLRPVPF ASEMAISKTV AWLNEQLELG NERLLLMDCR PQELYESSHI ESAINVAIPG IMLRRLQKGN
LPVRALFTRG EDRDRFTRRC GTDITVLYDE SSSDWNENTG GESVLGLLLK KLGDEGCRAF YLEGGFSKFQ AEFSLHCETN LDGSCSSSSP
PLPVLGLGGL RISSDSSSDI ESDLDRPNIS ATSDGSPLS NSQSPFPVEI LPFLYLGCAL DSTNLDVLEE FGIKYILNVT PNLNLFENA
GEFKYKQIPI SDHWSQNLQS FFPEAISFID EARGKNCGLV VHCLAGISRS VTVTVAYLMQ KLNLSMNDAY DIVKMKKSN I SPNFNFMGQL
LDFERTLGLS SPCDNRVPAQ QLYFTTPSNQ NVYQVDSLQS T

General references:

Groom L.A., Sneddon A.A., *et al.* (1996) *EMBO J.* 15:3621-3632

Storage: Can be stored at +4°C short term (1-2 weeks). For long term storage, aliquot and store at -20°C or -70°C.
Avoid repeated freezing and thawing cycles.

For research use only. This product is not intended or approved for human, diagnostics or veterinary use.



Manufactured for:
Immuno-Biological Laboratories, Inc. (IBL-America)
8201 Central Ave. NE, Suite P, Minneapolis, Minnesota 55432, USA
Phone: (888) 523-1246 Fax: (763) 780-2988
Email: info@ibl-america.com Web: www.ibl-america.com