

# Product information



## PPA2, 33-334aa

Human, His-tagged, Recombinant, *E.coli*

Cat. No. IBATGP2771

**Full name:** Inorganic pyrophosphatase 2, mitochondrial isoform 1

**NCBI Accession No.:** NP\_789845

**Synonyms:** Pyrophosphatase (inorganic) 2, HSPC124, SID6-306

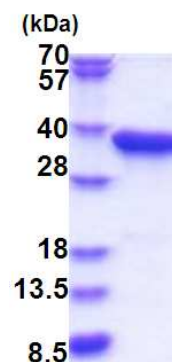
**Description:** PPA2 is localized to the mitochondrion, is highly similar to members of the inorganic pyrophosphatase (PPase) family, and contains the signature sequence essential for the catalytic activity of PPase. PPases catalyze the hydrolysis of pyrophosphate to inorganic phosphate, which is important for the phosphate metabolism of cells. Alternate transcriptional splice variants, encoding different isoforms, have been characterized. Recombinant human PPA2 protein, fused to His-tag at N-terminus, was expressed in *E.coli* and purified by using conventional chromatography techniques.

**Form:** Liquid. In 20mM Tris-HCl buffer (pH 8.0) containing 0.15M NaCl,  
10% glycerol, 1mM DTT

**Molecular Weight:** 37.1 kDa (325aa) confirmed by MALDI-TOF

**Purity:** > 95% by SDS - PAGE

**Concentration:** 1.0 mg/ml (determined by Bradford assay)



15% SDS-PAGE (3ug)

### Sequences of amino acids:

MGSSHHHHHH SSGLVPRGSH MGSALYHTEE RGQPCSQNYR LFFKNVTGHY I SPFHD I PLK VNSKEENG I P MKKARND EYE NLFNM I VE I P  
RWTNAKME I A TKEPMNPIKQ YVKDGLRYV ANIFPYKGYI WNYGTL PQTW EDPHEKDKST NCFGNDNP I D VCE I GSK I L S CGEVIHV K I L  
G I L A L I D E G E T D W K L I A I N A N D P E A S K F H D I D D V K K F K P G Y L E A T L N W F R L Y K V P D G K P E N Q F A F N G E F K N K A F A L E V I K S T H Q C W K A L L  
M K K C N G G A I N C T N V Q I S D S P F R C T Q E E A R S L V E S V S S S P N K E S N E E E Q V W H F L G K

### General references:

Gauthier-Campbell C., Bredt D.S., *et al.* (2004) *Mol. Biol. Cell* 15:2205-2217

**Storage:** Can be stored at +4°C short term (1-2 weeks). For long term storage, aliquot and store at -20°C or -70°C.  
Avoid repeated freezing and thawing cycles.

**For research use only. This product is not intended or approved for human, diagnostics or veterinary use.**



Manufactured for:

Immuno-Biological Laboratories, Inc. (IBL-America)  
8201 Central Ave. NE, Suite P, Minneapolis, Minnesota 55432, USA

Phone: (888) 523-1246 Fax.: (763) 780-2988

Email: [info@ibl-america.com](mailto:info@ibl-america.com) Web: [www.ibl-america.com](http://www.ibl-america.com)