

# Product information



## AMMECR1L, 1-310aa

Human, His-tagged, Recombinant, *E.coli*

Cat. No. IBATGP2767

**Full name:** AMMECR1-like protein

**NCBI Accession No.:** NP\_113633

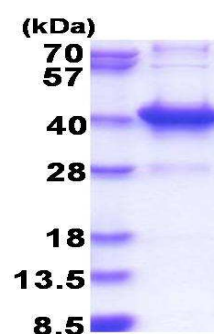
**Description:** AMMECR1L contains 1 AMMECR1 domain. Recombinant human AMMECR1L protein, fused to His-tag at N-terminus, was expressed in *E.coli* and purified by using conventional chromatography techniques.

**Form:** Liquid. In 20mM Tris-HCl buffer (pH 8.0) containing 0.15M NaCl, 10% glycerol, 1mM DTT

**Molecular Weight:** 36.9 kDa (333aa) confirmed by MALDI-TOF

**Purity:** > 90% by SDS - PAGE

**Concentration:** 0.5 mg/ml (determined by Bradford assay)



15% SDS-PAGE (3ug)

### Sequences of amino acids:

MGSSHHHHHH SSGLVPRGSH MGS MGKRRRCV PPLEPKLAAG CCGVKKPKLS GSGTHSHGNQ STTVPGSSSG PLQNHQHVDS SSGRENVSDL  
TLGPGNSPIT RMNPASGALS PLPRPNGTAN TTKNLVVTAE MCCYCFDVLV CHLYGFQPR LPRFTNDPYP LFVTWKTGRD KRLRGCIGTF  
SAMNLHSLGR EYTLTSALKD SRFPLTREE LPKLFCSVSL LTNFEDASDY LDWEVGVHGI RIEFINEKGV KRTATYLPEV AKEQDWDQIQ  
TIDSLLRKGG FKAPITSEFR KTIKLTRYRS EKVTISYAEY IASRQHCFQN GTLHAPPLYN HYS

### General references:

Mayya V., *et al.* (2009) *Sci. Signal.* 2:RA46-RA46

Dephoure N., *et al.* (2008) *Proc. Natl. Acad. Sci. U.S.A.* 105:10762-10767

**Storage:** Can be stored at +4°C short term (1-2 weeks). For long term storage, aliquot and store at -20°C or -70°C.  
Avoid repeated freezing and thawing cycles.

For research use only. This product is not intended or approved for human, diagnostics or veterinary use.



Manufactured for:

Immuno-Biological Laboratories, Inc. (IBL-America)  
8201 Central Ave. NE, Suite P, Minneapolis, Minnesota 55432, USA  
Phone: (888) 523-1246 Fax.: (763) 780-2988  
Email: [info@ibl-america.com](mailto:info@ibl-america.com) Web: [www.ibl-america.com](http://www.ibl-america.com)