

Product information



NELFE, 1-380aa

Human, His-tagged, Recombinant, *E.coli*

Cat. No. IBATGP2685

Full name: Negative elongation factor E

NCBI Accession No.: NP_002895

Synonyms: Negative elongation factor complex member E, D6S45, NELF-E, RD, RDBP, RDP

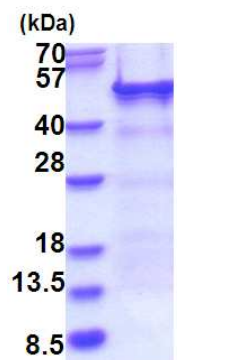
Description: NELFE is a part of complex termed negative elongation factor (NELF) which represses RNA polymerase II transcript elongation. This protein bears similarity to nuclear RNA-binding proteins; however, it has not been demonstrated that this protein binds RNA. It contains a tract of alternating basic and acidic residues, largely arginine (R) and aspartic acid (D). Recombinant human NELFE protein, fused to His-tag at N-terminus, was expressed in *E.coli* and purified by using conventional chromatography techniques..

Form: Liquid. In 20mM Tris-HCl buffer (pH 8.0) containing 0.2M NaCl,
50% glycerol, 5mM DTT

Molecular Weight: 45.6kDa (403aa) confirmed by MALDI-TOF

Purity: > 90% by SDS - PAGE

Concentration: 0.25 mg/ml (determined by BRADFORD assay)



15% SDS-PAGE (3ug)

Sequences of amino acids:

MGSSHHHHHH SSSLVPRGSH MGSMLVIPPGLSEEEALQK KFNKLNKKNK ALLALKKQSS SSTTSQGGVK RSLSEQPVM D TATATEQAKQ
LVKSGAISA I KAETKNSGFK RSRTLEGK LK DPEKGPVPTF QPFQRSISAD DDLQESSRRP QRKSLYESFV SSSDRLREL G PDGEEAEGPG
AGDGPPRSFD WGYEERSGAH SSASPPRSRS RDRSHERNRD RDRDRERDRD RDRDRDRERD RDRDRDRDRD RERDRDRERD RDRDREGPFR
RSDSFPERRA PRKGNLYVY GEDMTPTLLR GAFSPFGNII DLSMDPPRNC AFVTYEKMES ADQAVAELNG TQVESVQLKV NIARKQPM L D
AATGKSVWGS LAVQNSPKGC HRDKRTQIVY SDDVYKENLV DGF

General references:

Yamaguchi Y., Takagi T, *et al.* (1999) *Cell* 97:41-51

Surowy C.S., Hoganson G, *et al.* (1990) *Gene* 90:299-302

Storage: Can be stored at +4°C short term (1-2 weeks). For long term storage, aliquot and store at -20°C or -70°C.

Avoid repeated freezing and thawing cycles.

For research use only. This product is not intended or approved for human, diagnostics or veterinary use.



Manufactured for:

Immuno-Biological Laboratories, Inc. (IBL-America)
8201 Central Ave. NE, Suite P, Minneapolis, Minnesota 55432, USA

Phone: (888) 523-1246

Fax.: (763) 780-2988

Email: info@ibl-america.com

Web: www.ibl-america.com