

Product information



EPO1L, 24-468aa

Human, His-tagged, Recombinant, *E.coli*

Cat. No. IBATGP2669

Full name: ERO1-like protein alpha

NCBI Accession No.: NP_055399

Synonyms: ERO1-alpha, ERO1A

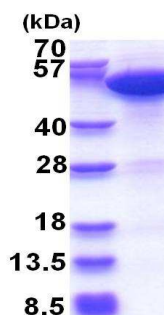
Description: ERO1-like protein alpha, also known as EPO1L, is an essential oxidoreductase that oxidizes proteins and is required for the folding of immunoglobulins. EPO1L covalently binds with PDI (protein disulfide-isomerase) and together they produce disulfide bonds between proteins in the endoplasmic reticulum. EPO1L is stimulated by hypoxia, suggesting that it is regulated through the HIF (hypoxia inducible transcription factor) pathway. EPO1L is ubiquitously expressed at low levels but expressed at high levels in upper digestive tract and esophagus. Recombinant human EPO1L protein, fused to His-tag at N-terminus, was expressed in *E.coli* and purified by using conventional chromatography techniques.

Form: Liquid. In 20mM Tris-HCl buffer (pH 8.0) containing 10% glycerol

Molecular Weight: 54.4 kDa (468aa)

Purity: > 90% by SDS - PAGE

Concentration: 1 mg/ml (determined by Bradford assay)



15% SDS-PAGE (3ug)

Sequences of amino acids:

MGSSHHHHH SSGLVPRGSH MGSEEQPET AAQRFCQVS GYLDCTCDV ETIDRFNNYR LFPRLQKLE SDYFRYYKVN LKRPCPFWND
ISQCGRRDCA VKPCQSDEVP DGIKSASYKY SEEANLIEE CEQAERLGAV DESLSEETQK AVLQWTKHDD SSDNFCEADD IQSPEAEYVD
LLLNPERYTG YKGPDAWKIW NVIYEENCFK PQTIKRPLNP LASGGTSEE NTFYSWLEGL CVEKRAFYRL ISGLHASINV HLSARYLLQE
TWLEKKWGHN ITEFQQRFDG ILTEGEGPRR LKNLYFLYLI ELRALSKVLP FFERPDFQLF TGNKIQDEEN KMLLLEILHE IKSFLPHFDE
NSFFAGDKKE AHKLEDFRL HFRNISRIMD CVGCFKRLW GKLQTQGLGT ALKILFSEKL IANMPESGPS YEFHLTRQEI VSLFNAFGRI
STSVKELENF RNLLQNIH

General references:

Otsu M., *et al.* (2006) *Antioxid. Redox Signal.* 8: 274-282.

Gess B., *et al.* (2003) *J Biochem.* 270: 2228-2235.

Storage: Can be stored at +4°C short term (1-2 weeks). For long term storage, aliquot and store at -20°C or -70°C.
Avoid repeated freezing and thawing cycles.

For research use only. This product is not intended or approved for human, diagnostics or veterinary use.



Manufactured for:

Immuno-Biological Laboratories, Inc. (IBL-America)
8201 Central Ave. NE, Suite P, Minneapolis, Minnesota 55432, USA
Phone: (888) 523-1246 Fax: (763) 780-2988
Email: info@ibl-america.com Web: www.ibl-america.com