

Product information



SKA1, 1-255aa

Human, His-tagged, Recombinant, *E.coli*

Cat. No. IBATGP2596

Full name: Spindle and kinetochore-associated protein 1

NCBI Accession No.: NP_001034624

Synonyms: C18orf24

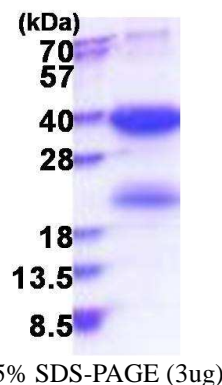
Description: SKA1, as known as spindle and kinetochore-associated protein 1, is a direct component of the kinetochore-microtubule interface and directly associates with microtubules as oligomeric assemblies. The complex facilitates the processive movement of microspheres along a microtubule in a depolymerization-coupled manner. In the complex, it mediates the interaction with microtubules. Recombinant human SKA1 protein, fused to His-tag at N-terminus, was expressed in *E.coli* and purified by using conventional chromatography.

Form: Liquid. 20mM Tris-HCl buffer (pH8.0) containing 10% glycerol
0.1M NaCl

Molecular Weight: 31.9 kDa(278aa) confirmed by MALDI-TOF

Purity: > 80% by SDS - PAGE

Concentration: 0.25 mg/ml (determined by Bradford assay)



Sequences of amino acids:

MGSSHHHHH SSGLVPRGSH MGSMASSDLE QLCSHVNEKI GNIKKTLRLR NCGQEPTLKT VLNKIGDEII VINELLNKLE LEIQYQEQTN
NSLKELCESL EEDYKDI EHL KENVPSHLPQ VVTQSCVKG SLDPEEPIK VEEPEPVKKP PKEQRSIKEM PFITCDEFNG VPSYMKSRLLT
YNQINDVIKE INKAVISKYK ILHQPKSMN SVTRNLYHRF IDEETKDTKG RYFIVEADIK EFTTLKADKK FHVLLNILRH CRRLSEVRGG
GLTRYVIT

General references:

Ota T. *et al.* (2004) *Nat Genet.* 36:40-45

Hanisch A. *et al.* (2006) *EMBO J.* 25: 5504-5515.

Storage: Can be stored at +4°C short term (1-2 weeks). For long term storage, aliquot and store at -20°C or -70°C.
Avoid repeated freezing and thawing cycles.

For research use only. This product is not intended or approved for human, diagnostics or veterinary use.



Manufactured for:

Immuno-Biological Laboratories, Inc. (IBL-America)
8201 Central Ave. NE, Suite P, Minneapolis, Minnesota 55432, USA
Phone: (888) 523-1246 Fax.: (763) 780-2988
Email: info@ibl-america.com Web: www.ibl-america.com