

Product information



HLA-DRB1_{30-227aa}

Human, His-tagged, Recombinant, *E.coli*

Cat. No. IBATGP2585

Full name: Major histocompatibility complex, class II, DR beta 1

NCBI Accession No.: NP_002115

Synonyms: DRB1, HLA DRB1, HLA-DR1B, HLA-DRB1

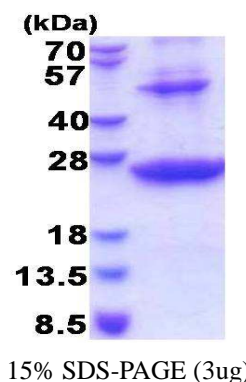
Description: HLA-DRB1 belongs to the HLA class II beta chain paralogs. The class II molecule is a heterodimer consisting of an alpha (DRA) and a beta chain (DRB), both anchored in the membrane. It plays a central role in the immune system by presenting peptides derived from extracellular proteins. Class II molecules are expressed in antigen presenting cells (APC: B lymphocytes, dendritic cells, macrophages). The beta chain is approximately 26-28 kDa. It is encoded by 6 exons. Exon one encodes the leader peptide; exons 2 and 3 encode the two extracellular domains; exon 4 encodes the transmembrane domain; and exon 5 encodes the cytoplasmic tail. Recombinant human HLA-DRB1 protein, fused to His-tag at N-terminus, was expressed in *E.coli*.

Form: Liquid. In 20mM Tris-HCl buffer (pH 8.0) containing 0.4M Urea, 10% glycerol

Molecular Weight: 25.2 kDa (219aa)

Purity: > 85% by SDS - PAGE

Concentration: 1 mg/ml (determined by Bradford assay)



Sequences of amino acids:

MGSSHHHHH SSGLVPRGSH MGDTRPRFLW QPKRECHFFN GTERVRFDR YFYNQEESVR FSDVGEFRA VTELGRPDAE YWNSQKDILE
QARAAVDTYC RHNYGVVESF TVQRRVQPKV TVYPSKTQPL QHNLLVCSV SGFYPGSIEV RWFLNGQEEK AGMVSTGLIQ NGDWTFTLV
MLETVPRSGE VYTCQVEHPS VTSPLTVEWR ARSESAQSK

General references:

Menendez-Benito V., *et al.* (2007) *Immunity*. 26:1-3

De Gassart A., *et al.* (2008) *Proc. Natl. Acad. Sci. U.S.A.* 105:3491-3496

Storage: Can be stored at +4°C short term (1-2 weeks). For long term storage, aliquot and store at -20°C or -70°C. Avoid repeated freezing and thawing cycles.

For research use only. This product is not intended or approved for human, diagnostics or veterinary use.



Manufactured for:

Immuno-Biological Laboratories, Inc. (IBL-America)
8201 Central Ave. NE, Suite P, Minneapolis, Minnesota 55432, USA
Phone: (888) 523-1246 Fax.: (763) 780-2988
Email: info@ibl-america.com Web: www.ibl-america.com