

Product information



KLK15, 22-256aa

Human, His-tagged, Recombinant, *E.coli*

Cat. No. IBATGP2558

Full name: Kallikrein-15 isoform 4 preproprotein

NCBI Accession No.: NP_059979

Synonyms: Kallikrein-related peptidase 15, ACO, HSRNASPH

Description: Kallikreins are a subgroup of serine proteases having diverse physiological functions. Growing evidence suggests that many kallikreins are implicated in carcinogenesis and some have potential as novel cancer and other disease biomarkers. KLK15 is one of the fifteen kallikrein subfamily members located in a cluster on chromosome 19. In prostate cancer, it has increased expression, which indicates its possible use as a diagnostic or prognostic marker for prostate cancer. KLK15 contains multiple polyadenylation sites and alternative splicing results in multiple transcript variants encoding distinct isoforms. Recombinant human KLK15 protein, fused to His-tag at N-terminus, was expressed in *E.coli*.

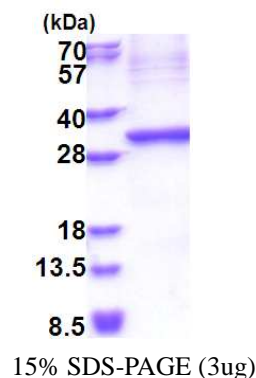
Form: Liquid. In 20mM Tris-HCl buffer (pH 8.0) containing

10% glycerol, 0.4M Urea

Molecular Weight: 28.2 kDa (258aa)

Purity: > 90 % by SDS - PAGE

Concentration: 1.0 mg/ml (determined by Bradford assay)



Sequences of amino acids:

MGSSHHHHH SSGLVPRGSH MGSLLLEGDEC APHSQPWQVA LYERGRFNCG ASLISPHWVL SAAHCQSRFM RVRLGEHNLR KRDGPEQLRT
TSRVIHPHRY EARSHRNDIM LLRLVQPARL NPQVRPAVLP TRCPHPGEAC VVSGWGLVSH NEPGTAGSPR SQVSLPDTLH CANISII SDT
SCDKSYPGRL TNTMVCAGAE GRGAESCEGD SGGPLVCGGI LQGI VSWGDV PCDNTTKPGV YTKVCHYLEW IRETMKRN

General references:

Yousef GM, Scorilas A, *et al.* (2001) *J Biol Chem* 276 (1): 53–61.

Storage: Can be stored at +4°C short term (1-2 weeks). For long term storage, aliquot and store at -20°C or -70°C.
Avoid repeated freezing and thawing cycles.

For research use only. This product is not intended or approved for human, diagnostics or veterinary use.



Manufactured for:

Immuno-Biological Laboratories, Inc. (IBL-America)
8201 Central Ave. NE, Suite P, Minneapolis, Minnesota 55432, USA

Phone: (888) 523-1246 Fax.: (763) 780-2988

Email: info@ibl-america.com Web: www.ibl-america.com