

Product information



SELPLG, 42-121aa

Human, His-tagged, Recombinant, *E.coli*

Cat. No. IBATGP2530

Full name: P-selectin glycoprotein ligand 1 isoform 2 precursor

NCBI Accession No.: NP_002997

Synonyms: CD162, CLA, PSGL-1, PSGL1

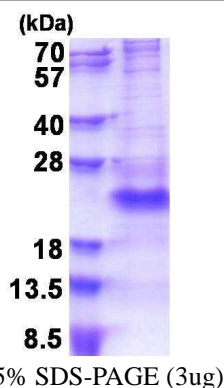
Description: SELPLG is a glycoprotein that functions as a high affinity counter-receptor for the cell adhesion molecules P-, E- and L- selectin expressed on myeloid cells and stimulated T lymphocytes. As such, this protein plays a critical role in leukocyte trafficking during inflammation by tethering of leukocytes to activated platelets or endothelia expressing selectins. This protein requires two post-translational modifications, tyrosine sulfation and the addition of the sialyl Lewis x tetrasaccharide (sLex) to its O-linked glycans, for its high-affinity binding activity. Aberrant expression of this gene and polymorphisms in this gene are associated with defects in the innate and adaptive immune response. Alternate splicing results in multiple transcript variants. Recombinant human SELPLG protein, fused to His-tag at N-terminus, was expressed in *E.coli* and purified by using conventional chromatography techniques.

Form: Liquid. In 20mM Tris-HCl buffer (pH 8.0) containing 0.15M NaCl,
10% glycerol, 1mM DTT.

Molecular Weight: 10.9 kDa (103aa) confirmed by MALDI-TOF
(Molecular size on SDS-PAGE will appear higher)

Purity: > 80% by SDS - PAGE

Concentration: 0.25 mg/ml (determined by Bradford assay)



Sequences of amino acids:

MGSSHHHHHH SSGLVPRGSH MGSQATEY EY LDYFLPETE PPEMLRNSTD TTPLTGPGTP ESTTVEPAAR RSTGLDAGGA VTELTTLAN
MGNLSTDSAA MEI

General references:

Stübke K, Wicklein D, *et al.* (2012). *Cancer Lett.* 321(1):89-99.

Gong L, Cai Y, *et al.* (2012). *Pathol Oncol Res.* 18(4):989-96.

Storage: Can be stored at +4°C short term (1-2 weeks). For long term storage, aliquot and store at -20°C or -70°C.
Avoid repeated freezing and thawing cycles.

For research use only. This product is not intended or approved for human, diagnostics or veterinary use.



Manufactured for:
Immuno-Biological Laboratories, Inc. (IBL-America)
8201 Central Ave. NE, Suite P, Minneapolis, Minnesota 55432, USA
Phone: (888) 523-1246 Fax: (763) 780-2988
Email: info@ibl-america.com Web: www.ibl-america.com