

# Product information



## XRCC2<sub>1-280aa</sub>

Human, His-tagged, Recombinant, *E.coli*

Cat. No. IBATGP2509

**Full name:** DNA repair protein XRCC2

**NCBI Accession No.:** NP\_005422

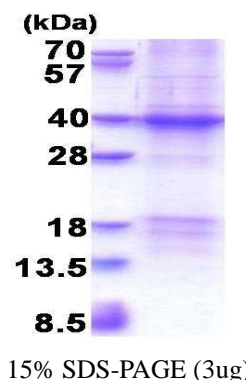
**Description:** XRCC2 is a member of the RecA/Rad51-related protein family that participates in homologous recombination to maintain chromosome stability and repair DNA damage. This gene is involved in the repair of DNA double-strand breaks by homologous recombination and it functionally complements Chinese hamster *irs1*, a repair-deficient mutant that exhibits hypersensitivity to a number of different DNA-damaging agents. Recombinant human XRCC2 protein, fused to His-tag at N-terminus, was expressed in *E.coli*.

**Form:** Liquid. In 20mM Tris-HCl buffer (pH 8.0) containing 0.4M Urea, 10% glycerol

**Molecular Weight:** 34.3 kDa (303aa)

**Purity:** > 80% by SDS - PAGE

**Concentration:** 1 mg/ml (determined by Bradford assay)



### Sequences of amino acids:

MGSSHHHHH SSGLVPRGSH MGSMSAFHR AESGTELLAR LEGRSSLKEI EPNLFADEDS PVHGDILEFH GPEGTGKTEM LYHLTARCIL  
PKSEGGLEVE VLFIDTDYHF DMLRLVTILE HRLSQSSEEI IKYCLGRFFL VYCSSSTHLL LTLYSLESMT CSHPSLCLLI LDSLSAFYWI  
DRVNGGESVN LQESTLRKCS QCLEKLVNDY RLVLFATTQT IMQKASSSE EPHASRRLC DVDIDYRPLY CKAWQQLVKH RMFFSKQDSD  
QSSNQFSLVS RCLKNSLKK HFFIIGESGV EFC

### General references:

Masson J.Y., *et al.* (2001) *Genes Dev.* 15:3296-3307

Miller K.A., *et al.* (2002) *J. Biol. Chem.* 277:8406-8411

**Storage:** Can be stored at +4°C short term (1-2 weeks). For long term storage, aliquot and store at -20°C or -70°C.  
Avoid repeated freezing and thawing cycles.

**For research use only. This product is not intended or approved for human, diagnostics or veterinary use.**



Manufactured for:

Immuno-Biological Laboratories, Inc. (IBL-America)  
8201 Central Ave. NE, Suite P, Minneapolis, Minnesota 55432, USA  
Phone: (888) 523-1246 Fax.: (763) 780-2988  
Email: [info@ibl-america.com](mailto:info@ibl-america.com) Web: [www.ibl-america.com](http://www.ibl-america.com)