

Product information



PABPN1, 119-306aa

Human, His-tagged, Recombinant, *E.coli*

Cat. No. IBATGP2500

Full name: Polyadenylate-binding protein 2

NCBI Accession No.: NP_004634

Synonym: OPMD, PAB2, PABII, PABP-2, PABP2

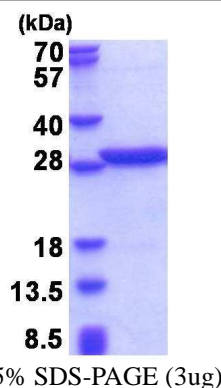
Description: PABPN1 is an abundant nuclear protein that binds with high affinity to nascent poly(A) tails. The protein is required for progressive and efficient polymerization of poly(A) tails at the 3' ends of eukaryotic transcripts and controls the size of the poly(A) tail to about 250 nt. At steady-state, this protein is localized in the nucleus whereas a different poly(A) binding protein is localized in the cytoplasm. This gene contains a GCG trinucleotide repeat at the 5' end of the coding region, and expansion of this repeat from the normal 6 copies to 8-13 copies leads to autosomal dominant oculopharyngeal muscular dystrophy (OPMD) disease. Related pseudogenes have been identified on chromosomes 19 and X. Read-through transcription also exists between this gene and the neighboring upstream BCL2-like 2 (BCL2L2) gene. Recombinant human PABPN1 protein, fused to His-tag at N-terminus, was expressed in *E.coli*.

Form: Liquid. In 20mM Tris-HCl buffer (pH 8.0) containing 0.4M Urea, 10% glycerol

Molecular Weight: 23.8 kDa (211aa)

Purity: > 95% by SDS - PAGE

Concentration: 1 mg/ml (determined by Bradford assay)



Sequences of amino acids:

MGSSHHHHHH SSGLVPRGSH MGSLEAIKAR VREMEEAEK LKELQNEVEK QNMSPPPGN AGPVIMSI EE KMEADARSIY VGNVDYGATA
EELEAHFHGC GSVNRVTILC DKFSGHPKGF AYIEFSDKES VRTSLALDES LFRGRQIKVI PKRTNRPGIS TDRGFPRAR YRARTTNYS
SRSRFYSGFN SRPRGRVYRG RARATSWYSP Y

General references:

Fan X., *et al.* (2001) *Hum. Mol. Genet.* 10:2341-2351.

Storage: Can be stored at +4°C short term (1-2 weeks). For long term storage, aliquot and store at -20°C or -70°C.
Avoid repeated freezing and thawing cycles.

For research use only. This product is not intended or approved for human, diagnostics or veterinary use.



Manufactured for:

Immuno-Biological Laboratories, Inc. (IBL-America)
8201 Central Ave. NE, Suite P, Minneapolis, Minnesota 55432, USA
Phone: (888) 523-1246 Fax.: (763) 780-2988
Email: info@ibl-america.com Web: www.ibl-america.com