

Product information



MLF1IP, 147-418a

Human, His-tagged, Recombinant, *E.coli*

Cat. No. IBATGP2495

Full name: Centromere protein U

NCBI Accession No.: NP_078905

Synonyms: CENP50, CENPU, CENPU50, KLIP1, PBIP1

Description: MLF1IP, as known as centromere, is a specialized chromatin domain, present throughout the cell cycle that acts as a platform on which the transient assembly of the kinetochore occurs during mitosis. It plays an important role in the correct PLK1 localization to the mitotic kinetochores. It is a scaffold protein responsible for the initial recruitment and maintenance of the kinetochore PLK1 population until its degradation. It also involved in transcriptional repression. Recombinant human MLF1IP protein, fused to His-tag at N-terminus, was expressed in *E.coli*.

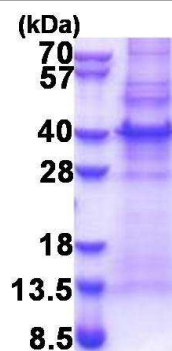
Form: Liquid. 20mM Tris-HCl buffer (pH8.0) containing 10% glycerol

0.4M Urea

Molecular Weight: 33.7kDa (295aa)

Purity: > 80% by SDS - PAGE

Concentration: 1 mg/ml (determined by Bradford assay)



15% SDS-PAGE (3ug)

Sequences of amino acids:

MGSSHHHHH SSGLVPRGSH MGSTRRKVKS AEKISTQRHE VIRTASSEL SEKPAESVTS KKTGPLSAQP SVEKENLAIE SSKTQKKGK
ISHDKRKKSR SKAIGSDTSD IVHIWCPEGM KTSDIKELNI VLPEFEKTHL EHQQRIESKV CKAAIATFYV NVKEQFIKML KESQMLTNLK
RKNAKMISDI EKQRQRMIEV QDELLRLEPQ LKQLQTKYDE LKERKSSLRN AAYFLSNLQK LYQDYSVDVA QEPNVKETYD SSSLPALLFK
ARTLLGAESH LRNINHQLEK LLDQG

General references:

Foltz DR. *et al.* (2006) *Nat Cell Biol.* 8:458-469.

Storage: Can be stored at +4°C short term (1-2 weeks). For long term storage, aliquot and store at -20°C or -70°C.

Avoid repeated freezing and thawing cycles.

For research use only. This product is not intended or approved for human, diagnostics or veterinary use.



Manufactured for:

Immuno-Biological Laboratories, Inc. (IBL-America)
8201 Central Ave. NE, Suite P, Minneapolis, Minnesota 55432, USA

Phone: (888) 523-1246 Fax.: (763) 780-2988

Email: info@ibl-america.com Web: www.ibl-america.com