

Product information



Recombinant Human Complement Factor B Protein

Catalog Number: IBATGP2479

PRODUCT INFORMATION

Expression System

E.coli

Domain

260-764aa

UniProt No.

P00751

NCBI Accession No.

NP_001701

Alternative Names

complement factor B, AHuS4, BF, BFD, CFAB, FB, FBI12, GBG, H2-Bf, PBF2

PRODUCT SPECIFICATION

Molecular Weight

59.4kDa (528aa)

Concentration

1.0 mg/ml (determined by Bradford assay)

Formulation

Liquid. In 20mM Tris-HCl buffer (pH 8.0) containing 0.4M uREA, 10% glycerol

Purity

> 85% by SDS - PAGE

Tag

His-Tag

Applications

SDS-PAGE, Denatured

Storage Condition

Can be stored at +2C to +8C for 1 week. For long term storage, aliquot and store at -20C to -80C. Avoid repeated freezing and thawing cycles.

BACKGROUND

Description

CFB encodes complement factor B, a component of the alternative pathway of complement activation. Factor B circulates in the blood as a single chain polypeptide. upon activation of the alternative pathway, it is cleaved by complement factor D yielding the noncatalytic chain Ba and the catalytic subunit Bb. The active subunit Bb is a serine protease which associates with C3b to form the alternative pathway C3 convertase. Bb is involved in the proliferation of preactivated B lymphocytes, while Ba inhibits their proliferation. Recombinant human CFB-Bb protein, fused to His-tag at N-terminus, was expressed in E. coli.

Amino acid Sequence

MGSSHHHHHH SSGLVPRGSH MGSKIVLDPS GSMNIYLVLD GSDSIGASNF TGAKKCLVNL

For research use only. This product is not intended or approved for human, diagnostics or veterinary use.



Manufactured for:

Immuno-Biological Laboratories, Inc. (IBL-America)
8201 Central Ave. NE, Suite P, Minneapolis, Minnesota 55432, USA
Phone: (888) 523-1246 Fax.: (763) 780-2988
Email: info@ibl-america.com Web: www.ibl-america.com

Recombinant Human Complement Factor B Protein

Catalog Number: IBATGP2479

IEKVASYGVK PRYGLVTYAT YPKIWVKVSE ADSSNADWVT KQLNEINYED HKLKSGTNTK
KALQAVYSMM SWPDDVPEEG WNRTRHVIL MTDGLHNMGG DPITVIDEIR DLLYIGKDRK
NPREDYLDVY VFGVGPLVNQ VNINALASKK DNEQHVFKVK DMENLEDVfy QMIDESQSLS
LCGMVWEHRK GTDYHKQPWQ AKISVIRPSK GHESCMGAVV SEYFVLTAAH CFTVDDKEHS
IKVSVGGEKR DLEIEVVLfH PNYNINGKKE AGIPEFYDYD VALIKLKNKL KYGQTIRPIC
LPCTEGTTRA LRLPPTTTCQ QQKEELPAQ DIKALFVSEE EKKLTRKEVY IKNGDKKGSC
ERDAQYAPGY DKVKDISEVV TPRFLCTGGV SPYADPNTCR GDSGGPLIVH KRSRFIQVGV
ISWGVVDVCK NQKRQKQVPA HARDFHINLF QVLPWLKEKL QDEDLGFL

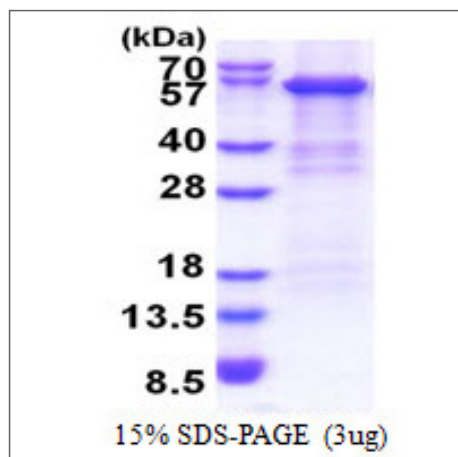
General References

Wu,L., et al. (2013) Invest. Ophthalmol. Vis. Sci. 54 (1), 170-174

Thakkinstian,A., et al. (2012) Am. J. Epidemiol. 176 (5), 361-372

DATA

SDS-PAGE



3ug by SDS-PAGE under reducing condition and visualized by coomassie blue stain

For research use only. This product is not intended or approved for human, diagnostics or veterinary use.