

Product information



MTCP1, 1-107aa

Human, His-tagged, Recombinant, *E.coli*

Cat. No. IBATGP2402

Full name: Mature T-cell proliferation 1

NCBI Accession No.: NP_001018025

Synonyms: P13MTCP1, p8MTCP1

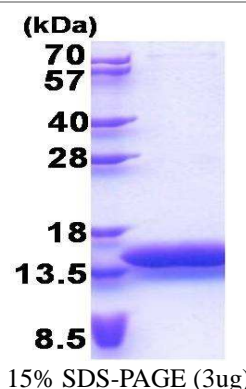
Description: MTCP1 was identified by involvement in some t(X;14) translocations associated with mature T-cell proliferations. This region has a complex gene structure, with a common promoter and 5' exon spliced to two different sets of 3' exons that encode two different proteins. It represents the upstream 13 kDa protein that is a member of the TCL1 family. MTCP1 may be involved in leukemogenesis. Recombinant human MTCP1 protein, fused to His-tag at N-terminus, was expressed in *E.coli* and purified by using conventional chromatography techniques.

Form: Liquid. In 20mM Tris-HCl buffer (pH 8.0) containing 0.15M NaCl,
10% glycerol, 1mM DTT

Molecular Weight: 15.0 kDa (130aa) confirmed by MALDI-TOF

Purity: > 95% by SDS - PAGE

Concentration: 1 mg/ml (determined by Bradford assay)



Sequences of amino acids:

MGSSHHHHHH SSGLVPRGSH MGSMAGEDVG APPDHLWVHQ EGIYRDEYQR TWAVVEEET SFLRARVQQI QVPLGDAARP SHLLTSQLPL
MWQLYPEERY MDNNSRLWQI QHMLMVRGVQ ELLKLLPDD

General references:

Laine J., *et al.* (2000) *Mol. Cell.* 6:395-407

Laine J., *et al.* (2002) *J. Biol. Chem.* 277:3743-3751

Storage: Can be stored at +4°C short term (1-2 weeks). For long term storage, aliquot and store at -20°C or -70°C.
Avoid repeated freezing and thawing cycles.

For research use only. This product is not intended or approved for human, diagnostics or veterinary use.



Manufactured for:

Immuno-Biological Laboratories, Inc. (IBL-America)
8201 Central Ave. NE, Suite P, Minneapolis, Minnesota 55432, USA
Phone: (888) 523-1246 Fax: (763) 780-2988
Email: info@ibl-america.com Web: www.ibl-america.com