

# Product information



## CRIP1, 1-77aa

Human, His-tagged, Recombinant, *E.coli*

Cat. No. IBATGP2372

**Full name:** Cysteine-rich protein 1

**NCBI Accession No.:** NP\_001302

**Synonyms:** Cysteine-rich protein 1 (intestinal), CRHP, CRIP, CRP-1, CRP1

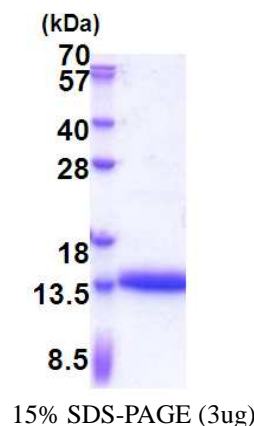
**Description:** Cysteine-rich intestinal protein (CRIP) belongs to the LIM/double zinc finger protein family, members of which include cysteine- and glycine-rich protein-1, rhombotin-1, rhombotin-2, and rhombotin-3. CRIP may be involved in intestinal zinc transport. Recombinant human CRIP1 protein, fused to His-tag at N-terminus, was expressed in *E.coli* and purified by using conventional chromatography techniques.

**Form:** Liquid. In 20mM Tris-HCl(pH 8.0) containing 20% glycerol,  
0.15M NaCl, 1mM DTT

**Molecular Weight:** 10.9 kDa (100aa) confirmed by MALDI-TOF

**Purity:** > 95% by SDS - PAGE

**Concentration:** 0.25 mg/ml (determined by Bradford assay)



### Sequences of amino acids:

MGSSHHHHHH SSGLVPRGSH MGSMPKCPKC NKEVYFAERV TSLGKDWHRP CLKCEKCGKT LTSGGHAHE GKPYCNHPCY AAMFGPKGFG  
RGAESHTFK

### General references:

Tsui S.K.W., Yam N.Y., *et al.* (1994), *Biochem. Biophys. Res. Commun.* 205:497-505

**Storage:** Can be stored at +4°C short term (1-2 weeks). For long term storage, aliquot and store at -20°C or -70°C.  
Avoid repeated freezing and thawing cycles.

**For research use only. This product is not intended or approved for human, diagnostics or veterinary use.**



Manufactured for:

Immuno-Biological Laboratories, Inc. (IBL-America)  
8201 Central Ave. NE, Suite P, Minneapolis, Minnesota 55432, USA  
Phone: (888) 523-1246 Fax: (763) 780-2988  
Email: [info@ibl-america.com](mailto:info@ibl-america.com) Web: [www.ibl-america.com](http://www.ibl-america.com)