

Product information



PPP1R3B, 1-285aa

Human, His-tagged, Recombinant, *E.coli*

Cat. No. IBATGP2330

Full name: Protein phosphatase 1 regulatory subunit 3B

NCBI Accession No.: NP_001188258

Synonyms: GL, PPP1R4, PTG

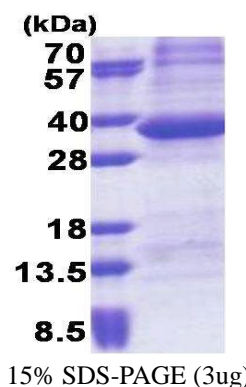
Description: PPP1R3B is the catalytic subunit of the serine/threonine phosphatase, protein phosphatase-1. The protein is expressed in liver and skeletal muscle tissue and may be involved in regulating glycogen synthesis in these tissues. This gene may be involved in type 2 diabetes and maturity-onset diabetes of the young. Alternate splicing results in multiple transcript variants that encode the same protein. Recombinant human PPP1R3B protein, fused to His-tag at N-terminus, was expressed in *E.coli*.

Form: Liquid. In 20mM Tris-HCl buffer (pH 8.0) containing 0.4M urea, 10% glycerol

Molecular Weight: 35.1 kDa (308aa)

Purity: > 85% by SDS - PAGE

Concentration: 1 mg/ml (determined by Bradford assay)



Sequences of amino acids:

MGSSHHHHH SSGLVPRGSH MGSMMAVDIE YRYNCMAPSL RQERFAFKIS PKPSKPLRPC IQLSSKNEAS GMVAPAVQEK KVKKRVSFAD
NQGLALTMVK VFSEFDDPLD MPFNITELLD NIVSLTTAES ESFVLDFSQP SADYLDNRNR LQADHVCLEN CVLKDKAIAAG TVKVQNLAPE
KTVKIRMTFD TWKSYTDFPC QYVKDITYAGS DRDTFSFDIS LPEKIQSYER MEFAVYYECN GQTYWDSNRG KNYRIIRAEL KSTQGMTKPH
SGPDLGISFD QFGSPRCYSG LFPEWPSYLG YEKLGPYY

General references:

Munro S., *et al.* (2005) *Diabetes*. 51:591-598

Ota T., *et al.* (2004) *Nat. Genet.* 36:40-45

Storage: Can be stored at +4°C short term (1-2 weeks). For long term storage, aliquot and store at -20°C or -70°C. Avoid repeated freezing and thawing cycles.

For research use only. This product is not intended or approved for human, diagnostics or veterinary use.



Manufactured for:

Immuno-Biological Laboratories, Inc. (IBL-America)
8201 Central Ave. NE, Suite P, Minneapolis, Minnesota 55432, USA
Phone: (888) 523-1246 Fax: (763) 780-2988
Email: info@ibl-america.com Web: www.ibl-america.com