

# Product information



## AP1AR, 1-302aa

Human, His-tagged, Recombinant, *E.coli*

Cat. No. IBATGP2321

**Full name:** Adaptor-related protein complex 1 associated regulatory protein **NCBI Accession No.:** NP\_061039

**Synonyms:** 2C18, C4orf16, gamma-BAR, GBAR, PRO0971

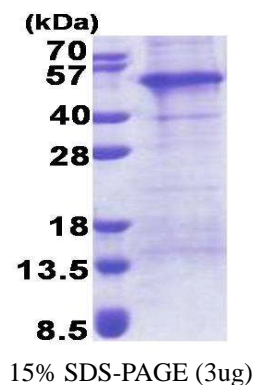
**Description:** Adaptor-related protein complex 1 associated regulatory protein, also known as AP1AR, is necessary for AP-1 dependent transport between the trans-Golgi network and endosomes. This protein regulates the membrane association of AP1G1/Gamma1-adaptin, one of the subunits of the AP-1 adapter complex. The direct interaction with AP1G1/Gamma1-adaptin attenuates the release of the AP-1 complex from membranes. Recombinant human AP1AR protein, fused to His-tag at N-terminus, was expressed in *E.coli* and purified by using conventional chromatography techniques.

**Form:** Liquid. In 20mM Tris-HCl buffer (pH 8.0) containing 0.15M NaCl,  
10% glycerol, 1mM DTT

**Molecular Weight:** 36.4 kDa (322aa) confirmed by MALDI-TOF  
(Molecular size on SDS-PAGE will appear higher)

**Purity:** > 90% by SDS - PAGE

**Concentration:** 0.25 mg/ml (determined by Bradford assay)



### Sequences of amino acids:

MGSSHHHHHH SSGLVPRGSH MGNCCWTQCF GLLRKEAGRL QRVGGGGGSK YFRTC SRGEH LTI EFENLVE SDEGESPGSS HRPLTEEEIV  
DLRERHYDSI AEKQKDLDDK IQKELALQEE KLRLEEEALY AAQREAAAA KQRKLLERQR QRIVQQYHPS NNGEYQSSGP EDDFESCLRN  
MKSQYEVFRS SRLSSDATVL TPNTSSCDL MTKTKSTSGN DDSTSLDLEW EDEEGMNRML PMRERSKTEE DILRAALKYS NKKTGSNPTS  
ASDDSNLEW ENDFVSAEMD DNGNSEYSGF VNPVLELSDS GIRHSOTDQQ TR

### General references:

Neubrand V.E., *et al.* (2005) *EMBO J.* 24:1122-1133

Wollscheid B., *et al.* (2009) *Nat. Biotechnol.* 27:378-386

**Storage:** Can be stored at +4°C short term (1-2 weeks). For long term storage, aliquot and store at -20°C or -70°C.

Avoid repeated freezing and thawing cycles.

**For research use only. This product is not intended or approved for human, diagnostics or veterinary use.**



Manufactured for:

Immuno-Biological Laboratories, Inc. (IBL-America)  
8201 Central Ave. NE, Suite P, Minneapolis, Minnesota 55432, USA

Phone: (888) 523-1246

Fax.: (763) 780-2988

Email: [info@ibl-america.com](mailto:info@ibl-america.com)

Web: [www.ibl-america.com](http://www.ibl-america.com)