

# Product information



## IMPACT, 1-320aa

Human, His-tagged, Recombinant, *E.coli*

Cat. No. IBATGP2266

**Full name:** protein IMPACT

**NCBI Accession No.:** NP\_060909

**Synonyms:** RWDD5

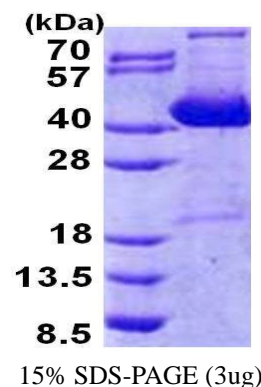
**Description:** IMPACT belongs to the IMPACT family and contains 1 RWD domain. This protein is translational regulator that ensures constant high levels of translation under amino acid starvation and acts by interacting with GCN1/GCN1L1, thereby preventing activation of GCN2 protein kinases (EIF2AK1 to 4) and subsequent down-regulation of protein synthesis. Recombinant human IMPACT protein, fused to His-tag at N-terminus, was expressed in *E.coli* and purified by using conventional chromatography techniques.

**Form:** Liquid. In 20mM Tris-HCl buffer (pH 8.0) containing 0.15M NaCl, 10% glycerol, 1mM DTT

**Molecular Weight:** 38.9kDa (343aa), confirmed by MALDI-TOF

**Purity:** > 90% by SDS - PAGE

**Concentration:** 1.0 mg/ml (determined by Bradford assay)



### Sequences of amino acids:

MGSSHHHHH SSGLVPRGSH MGSMAEGDAG SDQRQNEEIE AMAAIYGE EW CVIDDCAKIF CIRISDDIDD PKWTLCLQVM LPNEYPGTAP PIYQLNAPWL KGQERADLSN SLEEIYIQNI GESILYLWVE KIRDVLIQKS QMTEPGPDVK KKTEEEDVEC EDDLILACQP ESSVKALDFD ISETRTEVEV EELPPIDHGI PITDRRSTFQ AHLAPVVCPK QVKMVLKSLY ENKIASATH NIYAYRIYCE DKQTLQDCE DDGETAAGRR LLHLMELNV KNVMVVVSRW YGGILLGPDR FKHIINNCARN ILVEKNYNTS PEESKALGK NKKVRKDKKR NEH

### General references:

Habibi,D., *et al.* (2010) *J. Cell. Physiol.* 225 (1), 196-205

Pereira,C.M., *et al.* (2005) *J. Biol. Chem.* 280 (31), 28316-28323

**Storage:** Can be stored at +4°C short term (1-2 weeks). For long term storage, aliquot and store at -20°C or -70°C. Avoid repeated freezing and thawing cycles.

**For research use only. This product is not intended or approved for human, diagnostics or veterinary use.**



Manufactured for:

Immuno-Biological Laboratories, Inc. (IBL-America)  
8201 Central Ave. NE, Suite P, Minneapolis, Minnesota 55432, USA  
Phone: (888) 523-1246 Fax.: (763) 780-2988  
Email: [info@ibl-america.com](mailto:info@ibl-america.com) Web: [www.ibl-america.com](http://www.ibl-america.com)