

Product information



HES2, 1-173aa

Human, His-tagged, Recombinant, *E.coli*

Cat. No. IBATGP2260

Full name: Transcription factor HES-2

NCBI Accession No.: NP_061962

Synonyms: bHLHb40, hairy and enhancer of split 2

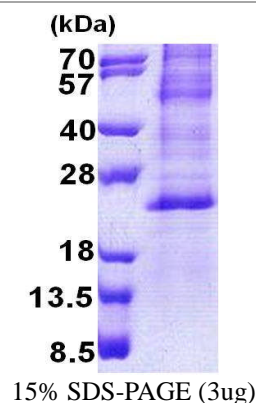
Description: Hairy and enhancer of split 2, also known as HES2, is a member of the HES family and contains one basic helix-loop-helix (bHLH) domain and one orange domain. The HES family members form a complex with TLE, the mammalian homologue of Groucho, and this interaction is mediated by the carboxy terminal WRPW motif of the HES proteins. Activation of Notch signaling pathway leads to activation of HES family genes through the interaction between Notch intracellular domain and RBPSUH (CSL). HES2 is expressed in a variety of adult and embryonic tissue. Recombinant human HES2 protein, fused to His-tag at N-terminus, was expressed in *E.coli*.

Form: Liquid. In 20mM Tris-HCl buffer (pH 8.0) containing 0.4M Urea, 10% glycerol

Molecular Weight: 20.9 kDa (196aa)

Purity: > 80% by SDS - PAGE

Concentration: 1 mg/ml (determined by Bradford assay)



Sequences of amino acids:

MGSSHHHHHH SSGLVPRGSH MGSMGLPRRA GDAELRKSL KPLLEKRRRA RINQSLSQLK GLILPLLGRE NSNCSKLEKA DVLEMTVRFL
QELPASSWPT AAPLPCDSYR EGYACVARL ARVLPACRVL EPAVSARLLE HLWRRRAASAT LDGGRAGDSS GPSAPAPAPA SAPEPASAPV
PSPSPPCGP GLWRPW

General references:

Akazawa C., *et al.* (1992) *J Biol Chem.* 267:21879-21885.

Ishibashi M., *et al.* (1993) *J Biochem.* 215:645-652.

Storage: Can be stored at +4°C short term (1-2 weeks). For long term storage, aliquot and store at -20°C or -70°C.
Avoid repeated freezing and thawing cycles.

For research use only. This product is not intended or approved for human, diagnostics or veterinary use.



Manufactured for:
Immuno-Biological Laboratories, Inc. (IBL-America)
8201 Central Ave. NE, Suite P, Minneapolis, Minnesota 55432, USA
Phone: (888) 523-1246 Fax.: (763) 780-2988
Email: info@ibl-america.com Web: www.ibl-america.com