

# Product information



## ATP1B2, 68-290aa

Human, His-tagged, Recombinant, *E.coli*

Cat. No. IBATGP2257

**Full name:** Sodium/potassium-transporting ATPase subunit beta-2

**NCBI Accession No.:** NP\_001669

**Synonyms:** ATPase, Na<sup>+</sup>/K<sup>+</sup> transporting, beta 2 polypeptide, AMOG

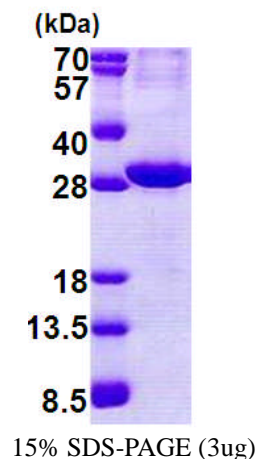
**Description:** ATP1B2 is the non-catalytic component of the active enzyme, which catalyzes the hydrolysis of ATP coupled with the exchange of Na<sup>+</sup> and K<sup>+</sup> ions across the plasma membrane. The exact function of the beta-2 subunit is not known. The protein is composed of three subunits: alpha (catalytic), beta and gamma. Recombinant human ATP1B2 protein, fused to His-tag at N-terminus, was expressed in *E.coli*.

**Form:** Liquid. In 20mM Tris-HCl buffer (pH 8.0) containing , 10% glycerol,  
0.4M Urea

**Molecular Weight:** 27.8 kDa (246aa)

**Purity:** > 90% by SDS - PAGE

**Concentration:** 1.0 mg/ml (determined by Bradford assay)



### Sequences of amino acids:

MGSSHHHHHH SSGLVPRGSH MGS DHTPKYQ DRLATPGLMI RPKTENLDVI VNVSDTESWD QHVQKLNKFL EPYNDSIQAQ KNDVCRPGRY  
YEQPDNGVLN YPKRACQFNR TQLGNCSGIG DSTHYGYSTG QPCVFIKMNR VINFYAGANQ SMNVTGAGKR DEDAENLGNF VMFPANGNID  
LMYFPYYGKK FHVNYTQPLV AVKFLNVTN VEVNVECRIN AANIATDDER DKFAGRVAFK LRINKT

### General references:

Hernando N., *et al.* (1994). *Biophys. Acta* 1189:109-111

**Storage:** Can be stored at +4°C short term (1-2 weeks). For long term storage, aliquot and store at -20°C or -70°C.  
Avoid repeated freezing and thawing cycles.

**For research use only. This product is not intended or approved for human, diagnostics or veterinary use.**



Manufactured for:

Immuno-Biological Laboratories, Inc. (IBL-America)  
8201 Central Ave. NE, Suite P, Minneapolis, Minnesota 55432, USA  
Phone: (888) 523-1246 Fax.: (763) 780-2988  
Email: [info@ibl-america.com](mailto:info@ibl-america.com) Web: [www.ibl-america.com](http://www.ibl-america.com)