

Product information



LY6G6F, 17-235aa

Human, His-tagged, Recombinant, *E.coli*

Cat. No. IBATGP2256

Full name: Lymphocyte antigen 6 complex locus protein G6f

NCBI Accession No.: NP_001003693

Synonyms: C6orf21, G6f, LY6G6D, NG32

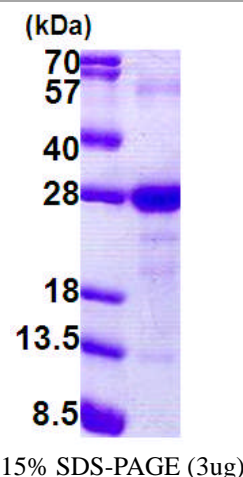
Description: The human LY6G6F protein is a type I transmembrane protein belonging to the immunoglobulin (Ig) superfamily, which is comprised of cell-surface proteins involved in the immune system and cellular recognition. This protein may play a role in the downstream signal transduction pathways involving GRB2 and GRB7. Recombinant human LY6G6F protein, fused to His-tag at N-terminus, was expressed in *E.coli*.

Form: Liquid. In 20mM Tris-HCl buffer (pH 8.0) containing 0.4M Urea
10% glycerol

Molecular Weight: 26.2 kDa (242aa)

Purity: > 90% by SDS - PAGE

Concentration: 1.0 mg/ml (determined by Bradford assay)



Sequences of amino acids:

MGSSHHHHHH SSGLVPRGSH MGSADNMQAI YVALGEAVEL PCPSPTLHG DEHLSWFCSP AAGSFTTLVA QVQVGRPAPD PGKPGRESRL
RLLGNYSLWL EGSKEEDAGR YWCAVLGQHH NYQNRVYDV LVLKGSQLSA RAADGSPCNV LLCSVPSRR MDSVTWQEGK GPVGRVQSF
WGSEAALLLV CPGEGLSEPR SRRPRI IRL MTHNKGVSFS LAASIDASPA LCAPSTGWDM PW

General references:

De Vet E.C.J.M., *et al.* (2003). *Biochem. J.* 375:207-213

Storage: Can be stored at +4°C short term (1-2 weeks). For long term storage, aliquot and store at -20°C or -70°C.
Avoid repeated freezing and thawing cycles.

For research use only. This product is not intended or approved for human, diagnostics or veterinary use.



Manufactured for:

Immuno-Biological Laboratories, Inc. (IBL-America)
8201 Central Ave. NE, Suite P, Minneapolis, Minnesota 55432, USA
Phone: (888) 523-1246 Fax.: (763) 780-2988
Email: info@ibl-america.com Web: www.ibl-america.com