

# Product information



## PRH1, 17-122aa

Human, His-tagged, Recombinant, *E.coli*

Cat. No. IBATGP2207

**Full name:** Proline-rich protein HaeIII subfamily 1 precursor

**NCBI Accession No.:** NP\_006241

**Synonyms:** PA

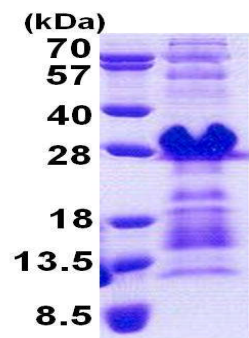
**Description:** PRH1 act as highly potent inhibitors of crystal growth of calcium phosphates. They provide a protective and reparative environment for dental enamel which is important for the integrity of the teeth. Recombinant human PRH1 protein, fused to His-tag at N-terminus, was expressed in *E.coli* and purified by using conventional chromatography techniques.

**Form:** Liquid. In 20mM Tris-HCl buffer (pH 8.0) containing 0.15M NaCl,  
30% glycerol, 1mM DTT

**Molecular Weight:** 13.4kDa (129aa), confirmed by MALDI-TOF  
(Molecular size on SDS-PAGE will appear higher)

**Purity:** > 80% by SDS - PAGE

**Concentration:** 0.25 mg/ml (determined by BCA assay)



15% SDS-PAGE (3ug)

### Sequences of amino acids:

MGSSHHHHHH SSGLVPRGSH MGSQDLNEDV SQEDVPLVIS DGGDSEQLFD EERQGPPGG QSQPSAGDG NQDDGPQQGP PQQGGQQQG  
PPPPQKPKQG PPQQGGHPPP PQGRPQGPQ QGGHPPPP

### General references:

Friedman, R.D., *et al.* (1975) *Am. J. Hum. Genet.* 27 (3), 304-314

**Storage:** Can be stored at +4°C short term (1-2 weeks). For long term storage, aliquot and store at -20°C or -70°C.  
Avoid repeated freezing and thawing cycles.

For research use only. This product is not intended or approved for human, diagnostics or veterinary use.



Manufactured for:

Immuno-Biological Laboratories, Inc. (IBL-America)  
8201 Central Ave. NE, Suite P, Minneapolis, Minnesota 55432, USA  
Phone: (888) 523-1246 Fax.: (763) 780-2988  
Email: [info@ibl-america.com](mailto:info@ibl-america.com) Web: [www.ibl-america.com](http://www.ibl-america.com)